

# Phospho-Chk1-S280 Rabbit pAb

Catalog No.: AP0017 **1 Publications**

## Basic Information

### Observed MW

54kDa

### Calculated MW

54kDa

### Category

Primary antibody

### Applications

WB, IHC-P, ELISA

### Cross-Reactivity

Human, Mouse, Rat

## Background

The protein encoded by this gene belongs to the Ser/Thr protein kinase family. It is required for checkpoint mediated cell cycle arrest in response to DNA damage or the presence of unreplicated DNA. This protein acts to integrate signals from ATM and ATR, two cell cycle proteins involved in DNA damage responses, that also associate with chromatin in meiotic prophase I. Phosphorylation of CDC25A protein phosphatase by this protein is required for cells to delay cell cycle progression in response to double-strand DNA breaks. Several alternatively spliced transcript variants have been found for this gene.

## Recommended Dilutions

**WB** 1:500 - 1:1000

**IHC-P** 1:50 - 1:200

**ELISA** Recommended starting concentration is 1 µg/mL. Please optimize the concentration based on your specific assay requirements.

## Immunogen Information

### Gene ID

1111

### Swiss Prot

O14757

### Immunogen

Synthetic peptide. This information is considered to be commercially sensitive.

### Synonyms

CHK1; Phospho-Chk1-S280

## Contact

☎ | 400-999-6126

✉ | [cn.market@abclonal.com.cn](mailto:cn.market@abclonal.com.cn)

🌐 | [www.abclonal.com.cn](http://www.abclonal.com.cn)

## Product Information

### Source

Rabbit

### Isotype

IgG

### Purification

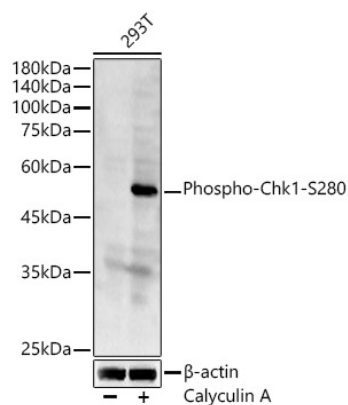
Affinity purification

### Storage

Store at -20°C. Avoid freeze / thaw cycles.

Buffer: PBS containing 50% glycerol, preserved with proclin300 or sodium azide (as specified on the Certificate of Analysis), pH 7.3.

## Validation Data



Western blot analysis of lysates from 293T cells, using Phospho-Chk1-S280 Rabbit pAb (AP0017) at 1:600 dilution.

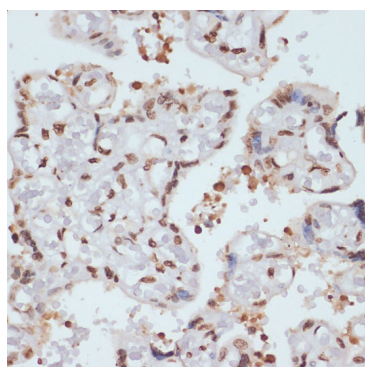
Secondary antibody: HRP-conjugated Goat anti-Rabbit IgG (H+L) (AS014) at 1:10000 dilution.

Lysates/proteins: 25µg per lane.

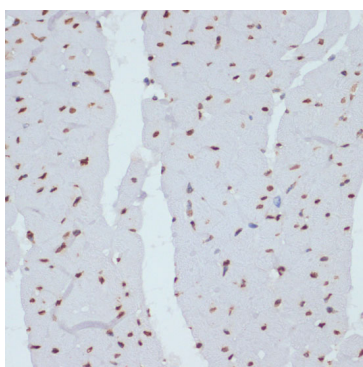
Blocking buffer: 3% nonfat dry milk in TBST.

Detection: ECL Basic Kit (RM00020).

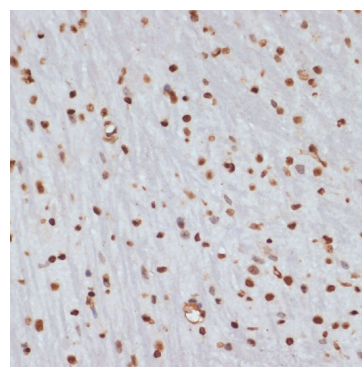
Exposure time: 90s.



Immunohistochemistry analysis of paraffin-embedded Human placenta using Phospho-Chk1-S280 Rabbit pAb (AP0017) at dilution of 1:100 (40x lens). Microwave antigen retrieval performed with 0.01M Tris/EDTA Buffer (pH 9.0) prior to IHC staining.



Immunohistochemistry analysis of paraffin-embedded Rat heart using Phospho-Chk1-S280 Rabbit pAb (AP0017) at dilution of 1:100 (40x lens). Microwave antigen retrieval performed with 0.01M Tris/EDTA Buffer (pH 9.0) prior to IHC staining.



Immunohistochemistry analysis of paraffin-embedded Mouse brain using Phospho-Chk1-S280 Rabbit pAb (AP0017) at dilution of 1:100 (40x lens). Microwave antigen retrieval performed with 0.01M Tris/EDTA Buffer (pH 9.0) prior to IHC staining.