

# Phospho-CDK1-Y15 Rabbit pAb

Catalog No.: AP0016SP **21 Publications**

## Basic Information

### Observed MW

34 kDa

### Calculated MW

34 kDa/28 kDa

### Category

Primary antibody

### Applications

WB, ELISA

### Cross-Reactivity

Human, Mouse, Rat

## Background

The protein encoded by this gene is a member of the Ser/Thr protein kinase family. This protein is a catalytic subunit of the highly conserved protein kinase complex known as M-phase promoting factor (MPF), which is essential for G1/S and G2/M phase transitions of eukaryotic cell cycle. Mitotic cyclins stably associate with this protein and function as regulatory subunits. The kinase activity of this protein is controlled by cyclin accumulation and destruction through the cell cycle. The phosphorylation and dephosphorylation of this protein also play important regulatory roles in cell cycle control. Alternatively spliced transcript variants encoding different isoforms have been found for this gene.

## Recommended Dilutions

**WB** 1:1000 - 1:2000

**ELISA** Recommended starting concentration is 1 µg/mL. Please optimize the concentration based on your specific assay requirements. For high-ratio antibody dilutions ( $\geq 1:10000$ ) a sequential dilution method is strongly recommended to ensure measurement accuracy.

## Immunogen Information

### Gene ID

983

### Swiss Prot

P06493

### Immunogen

Synthetic peptide. This information is considered to be commercially sensitive.

### Synonyms

CDC2; CDC28A; P34CDC2

## Contact

 | 400-999-6126

 | [cn.market@abclonal.com.cn](mailto:cn.market@abclonal.com.cn)

 | [www.abclonal.com.cn](http://www.abclonal.com.cn)

## Product Information

### Source

Rabbit

### Isotype

IgG

### Purification

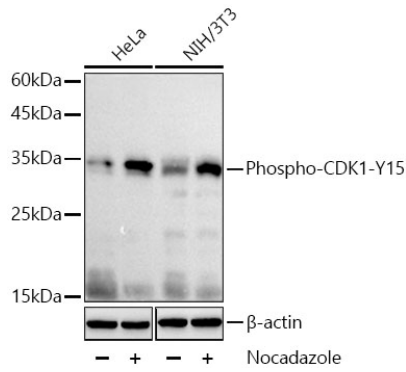
Affinity purification

### Storage

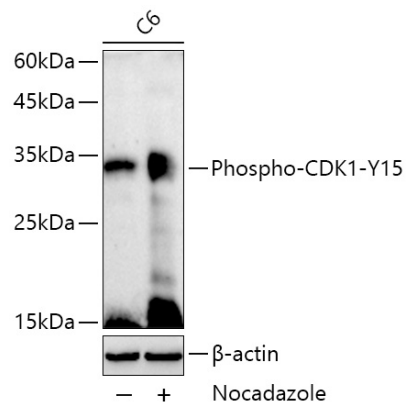
Store at -20°C. Avoid freeze / thaw cycles.

Buffer: PBS, pH 7.3, containing 50% glycerol. Preserved with Proclin300 or sodium azide. May contain 0.05% BSA as specified on the Certificate of Analysis.

## Validation Data



Western blot analysis of various lysates using Phospho-CDK1-Y15 Rabbit pAb (AP0016SP) at 1:1000 dilution incubated overnight at 4°C. HeLa cells were treated with Nocodazole (100ng/ml) at 37°C for 16 hours, NIH/3T3 cells were treated with Nocodazole (100ng/ml) at 37°C for 16 hours. Secondary antibody: HRP-conjugated Goat anti-Rabbit IgG (H+L) (AS014) at 1:10000 dilution. Lysates/proteins: 30 µg per lane. Blocking buffer: 3% nonfat dry milk in TBST. Detection: ECL Basic Kit (RM00020). Exposure time: 10 s.



Western blot analysis of lysates from C6 cells using Phospho-CDK1-Y15 Rabbit pAb (AP0016SP) at 1:1000 dilution incubated overnight at 4°C. C6 cells were treated with Nocodazole (100ng/ml) at 37°C for 16 hours. Secondary antibody: HRP-conjugated Goat anti-Rabbit IgG (H+L) (AS014) at 1:10000 dilution. Lysates/proteins: 30 µg per lane. Blocking buffer: 3% nonfat dry milk in TBST. Detection: ECL Basic Kit (RM00020). Exposure time: 90 s.