

Rabbit anti MBP-Tag pAb

Catalog No.: AE137

Basic Information

Observed MW

43kDa

Calculated MW

43kDa

Category

Tag antibody

Applications

WB

Cross-Reactivity

Species independent

Background

Biofilm microarray result was validated with RT-PCR. [More information is available at EcoGene: EG10554]. In addition to being the periplasmic substrate-binding component of the maltose ABC transporter, MalE with bound substrate is also able to bind to the chemoreceptor Tar to induce chemotaxis toward maltose.

Recommended Dilutions

WB 1:10000 - 1:60000

Immunogen Information

Gene ID

948538

Swiss Prot

P0AEX9

Immunogen

Recombinant protein (or fragment). This information is considered to be commercially sensitive.

Synonyms

ECK4026

Contact

☎ | 400-999-6126

✉ | cn.market@abclonal.com.cn

🌐 | www.abclonal.com.cn

Product Information

Source

Rabbit

Isotype

IgG

Purification

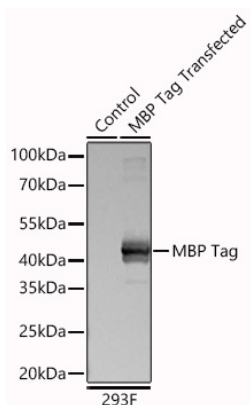
Affinity purification

Storage

Store at -20°C. Avoid freeze / thaw cycles.

Buffer: PBS containing 50% glycerol and 0.05% BSA, preserved with proclin300 or sodium azide (as specified on the Certificate of Analysis), pH 7.3.

Validation Data



Western blot analysis of lysates from wild type (WT) and 293F cells transfected with MBP Tag using Rabbit anti MBP Tag pAb (AE137) at 1:10000 dilution incubated overnight at 4°C.

Secondary antibody: HRP-conjugated Goat anti-Rabbit IgG (H+L) (AS014) at 1:10000 dilution.

Lysates/proteins: 25 µg per lane.

Blocking buffer: 3% nonfat dry milk in TBST.

Detection: ECL Basic Kit (RM00020)

.Exposure time: 10s.