

Rabbit anti His-tag mAb

Catalog No.: AE086

24 Publications

Basic Information

Observed MW

35 kDa, 58 kDa

Calculated MW

Category

Tag antibody

Applications

WB,IF/ICC,IP,ELISA

Cross-Reactivity

Species independent

CloneNo number

ARC2696

Background

Consecutive histidine residues (usually 6 to 10 in length) are often inserted into the amino acid sequences of recombinant proteins. The resulting His-tagged proteins can be detected by using His antibodies.

Recommended Dilutions

WB 1:10000 - 1:60000

IF/ICC 1:50 - 1:200

IP 0.5µg-4µg antibody for
200µg-400µg extracts of
whole cells

ELISA Recommended starting
concentration is 1 µg/mL.
Please optimize the
concentration based on
your specific assay
requirements.

Contact

☎ | 400-999-6126

✉ | cn.market@abclonal.com.cn

🌐 | www.abclonal.com.cn

Immunogen Information

Gene ID

Swiss Prot

Immunogen

Synthetic peptide. This information is considered to be commercially sensitive.

Synonyms

His;His tag;His-tag

Product Information

Source

Rabbit

Isotype

IgG

Purification

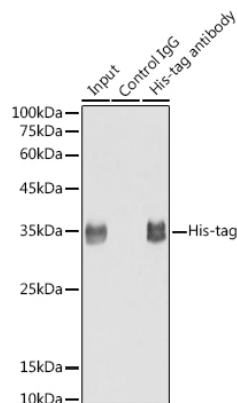
Affinity purification

Storage

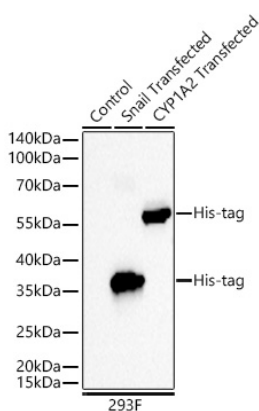
Store at -20°C. Avoid freeze / thaw cycles.

Buffer: PBS with 0.09% Sodium azide,0.05% BSA,50% glycerol,pH7.3.

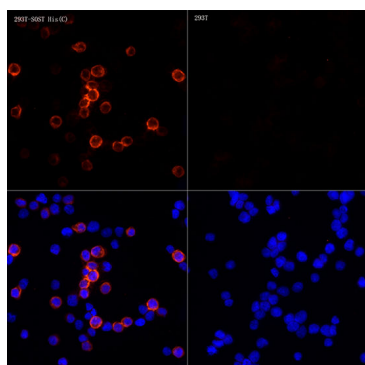
Validation Data



Immunoprecipitation analysis of 300 µg extracts of 293T cells using 3 µg His-tag antibody (AE086). Western blot was performed from the immunoprecipitate using His-tag antibody (AE086) at a dilution of 1:30000.



Western blot analysis of lysates from wild type (WT)293F cells, 293F cells transfected with Snail-His-tag and 293F cells transfected with CYP1A2-His-tag using Rabbit anti His-tag mAb (AE086) at 1:11000 dilution incubated overnight at 4°C.
Secondary antibody: HRP-conjugated Goat anti-Rabbit IgG (H+L) (AS014) at 1:10000 dilution.
Lysates/proteins: 20 µg per lane.
Blocking buffer: 3% nonfat dry milk in TBST.
Detection: ECL Basic Kit (RM00020)
Exposure time: 10 s.



Immunofluorescence analysis of 293T-SOST His(C) and 293T cells using Rabbit anti His-tag mAb (AE086) at dilution of 1:200 (40x lens). Secondary antibody: Cy3-conjugated Goat anti-Rabbit IgG (H+L) (AS007) at 1:500 dilution. Blue: DAPI for nuclear staining.