

Rabbit anti His-Tag pAb

Catalog No.: AE068

8 Publications

Basic Information

Observed MW

35kDa

Calculated MW

Category

Tag antibody

Applications

WB,IF/ICC,IP

Cross-Reactivity

Species independent

Background

Consecutive histidine residues (usually 6 to 10 in length) are often inserted into the amino acid sequences of recombinant proteins. The resulting His-tagged proteins can be detected by using His antibodies.

Recommended Dilutions

WB 1:500 - 1:1000

IF/ICC 1:50 - 1:200

IP 0.5µg-4µg antibody for
200µg-400µg extracts of
whole cells

Immunogen Information

Gene ID

Swiss Prot

Immunogen

A synthetic peptide corresponding to His tag.

Synonyms

His;His tag;His-tag

Contact

 | 400-999-6126

 | cn.market@abclonal.com.cn

 | www.abclonal.com.cn

Product Information

Source

Rabbit

Isotype

IgG

Purification

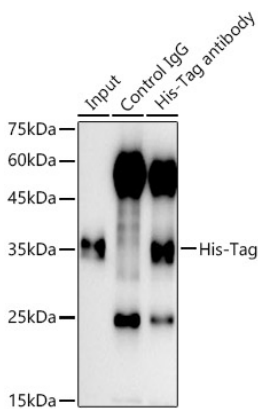
Affinity purification

Storage

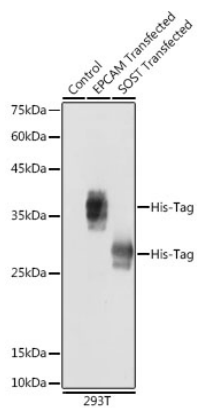
Store at -20°C. Avoid freeze / thaw cycles.

Buffer: PBS with 0.09% Sodium azide,50% glycerol,pH7.3.

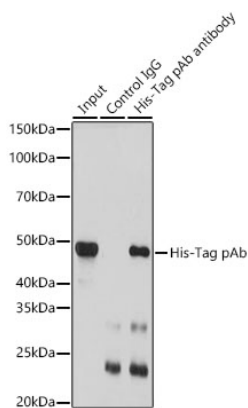
Validation Data



Immunoprecipitation analysis of 300ug extract cell lysate from 293T cells transfected with EPCAM expression vector containing a His-Tag with 3 μg Rabbit anti His-Tag pAb antibody (AE068). Western blot was performed from the immunoprecipitate using Rabbit anti His-Tag pAb antibody (AE068) at 1:5000 dilution.

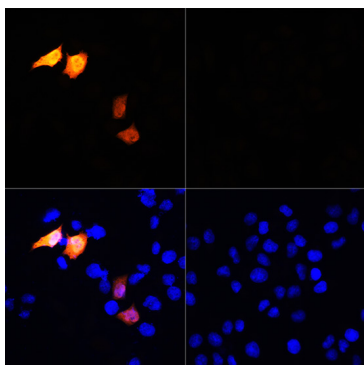


Western blot analysis of extracts of normal 293T cells, 293T transfected with EPCAM Protein and 293T transfected with SOST Protein, using Rabbit anti His-Tag pAb (AE068) at 1:1000 dilution. Secondary antibody: HRP Goat Anti-Rabbit IgG (H+L) (AS014) at 1:10000 dilution. Lysates/proteins: 25μg per lane. Blocking buffer: 3% nonfat dry milk in TBST. Detection: ECL Basic Kit (RM00020). Exposure time: 1s.



Immunoprecipitation analysis of extracts of cells using His-Tag pAb (AE068). Western blot was performed from the immunoprecipitate using His-Tag pAb (AE068) at a dilution of 1:3000.

Validation Data



Immunofluorescence analysis of HeLa cells using Rabbit anti His-Tag pAb (AE068) at dilution of 1:100. Blue: DAPI for nuclear staining.