

Mouse anti RFP-Tag mAb

Catalog No.: AE020

13 Publications

Basic Information

Observed MW

Refer to Figures

Calculated MW

27kDa

Category

Tag antibody

Applications

ELISA, WB

Cross-Reactivity

Species independent

CloneNo number

AMC0509

Background

Protein tags are peptide sequences genetically grafted onto a recombinant protein. Often these tags are removable by chemical agents or by enzymatic means, such as proteolysis or intein splicing. Tags are attached to proteins for various purposes. Epitope tags are short peptide sequences which are chosen because high-affinity antibodies can be reliably produced in many different species. These are usually derived from viral genes, which explain their high immunoreactivity. Epitope tags include V5-tag, Myc-tag, HA-tag and NE-tag. These tags are particularly useful for western blotting, immunofluorescence and immunoprecipitation experiments, although they also find use in antibody purification.

Recommended Dilutions

WB 1:5000-1:20000

Immunogen Information

Gene ID

Swiss Prot

Immunogen

Recombinant protein of RFP-Tag

Synonyms

RFP; RFP tag; RFP-tag

Contact

☎ | 400-999-6126

✉ | cn.market@abclonal.com.cn

🌐 | www.abclonal.com.cn

Product Information

Source

Mouse

Isotype

IgG1

Purification

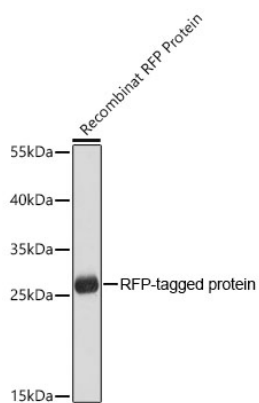
Affinity purification

Storage

Store at -20°C. Avoid freeze / thaw cycles.

Buffer: PBS with 0.02% sodium azide, 50% glycerol, pH 7.3.

Validation Data



Western blot analysis of recombinant RFP protein using Mouse anti RFP-Tag mAb (AE020) at dilution of 1:10000.

Secondary antibody: HRP Goat Anti-Mouse IgG (H+L) (AS003) at 1:10000 dilution.

Lysates/proteins: 10ng per lane.

Blocking buffer: 3% nonfat dry milk in TBST.