

Magnetic Beads-conjugated Rabbit IgG isotype control

Catalog No.: AC047

2 Publications

Basic Information

Observed MW

Calculated MW

Category

Loading control antibody

Applications

IP

Cross-Reactivity

CloneNo number

ARC5105-02-Beads

Conjugate

Magnetic Beads

Background

Recommended Dilutions

IP 30ul antibody (bead slurry) for 200µg-400µg extracts of whole cells

Immunogen Information

Gene ID

Swiss Prot

Immunogen

This information is considered to be commercially sensitive.

Synonyms

Contact

☎ | 400-999-6126

✉ | cn.market@abclonal.com.cn

🌐 | www.abclonal.com.cn

Product Information

Source

Rabbit

Isotype

IgG

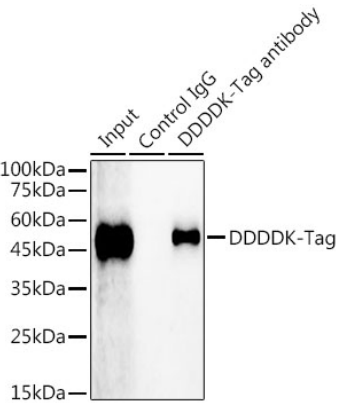
Purification

Protein A/G purification

Storage

Store at 4°C. Avoid freeze / thaw cycles.
Buffer: PBS with 0.05% proclin300,pH7.3.

Validation Data



Immunoprecipitation analysis of 300 ug extract cell lysate from 293T cells transfected with GSK3B expression vector containing a C-terminal DDDDK tag (1x) with 30uL Magnetic Beads-conjugated Rabbit anti-DDDDK-tag mAb antibody (AE097). Magnetic Beads-conjugated Rabbit IgG isotype control mAb was used as a negative control (AC047). Western blot was performed from the immunoprecipitate using Mouse anti DDDDK-Tag mAb antibody (AE005) at 1:2000 dilution. Secondary antibody: HRP-conjugated AffiniPure Goat Anti-Mouse IgG Light Chain (AS062).