

HRP-conjugated β -Actin Mouse mAb

Catalog No.: AC043

5 Publications

Basic Information

Observed MW

42kDa

Calculated MW

42kDa

Category

Loading control antibody

Applications

WB, ELISA

Cross-Reactivity

Human, Mouse, Rat

CloneNo number

AMC0001

Conjugate

HRP

Recommended Dilutions

WB 1:2000 - 1:50000

ELISA Recommended starting concentration is 1 μ g/mL. Please optimize the concentration based on your specific assay requirements.

Background

This gene encodes one of six different actin proteins. Actins are highly conserved proteins that are involved in cell motility, structure, integrity, and intercellular signaling. The encoded protein is a major constituent of the contractile apparatus and one of the two nonmuscle cytoskeletal actins that are ubiquitously expressed. Mutations in this gene cause Baraitser-Winter syndrome 1, which is characterized by intellectual disability with a distinctive facial appearance in human patients. Numerous pseudogenes of this gene have been identified throughout the human genome.

Immunogen Information

Gene ID

60

Swiss Prot

P60709

Immunogen

Recombinant protein (or fragment). This information is considered to be commercially sensitive.

Synonyms

BRWS1; PS1TP5BP1; HRP-conjugated β -Actin

Contact

☎ | 400-999-6126

✉ | cn.market@abclonal.com.cn

🌐 | www.abclonal.com.cn

Product Information

Source

Mouse

Isotype

IgG1, Lambda

Purification

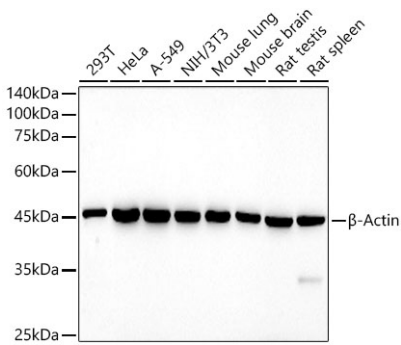
Affinity purification

Storage

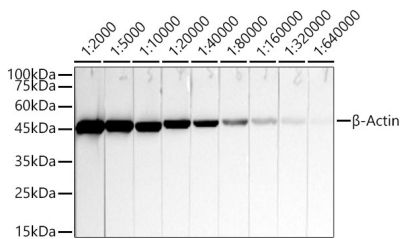
Store at -20°C. Avoid freeze / thaw cycles.

Buffer: PBS containing 50% glycerol, preserved with proclin300 or sodium azide (as specified on the Certificate of Analysis), pH 7.3.

Validation Data



Western blot analysis of various lysates using HRP-conjugated β -Actin Mouse mAb (AC043) at 1:5000 dilution.
Lysates/proteins: 25 μ g per lane.
Blocking buffer: 3% nonfat dry milk in TBST.
Detection: ECL Basic Kit (RM00020).
Exposure time: 180s.



Western blot analysis of lysates from HeLa, using HRP-conjugated β -Actin Rabbit mAb (AC043) at 1:2000-1:640000 dilution.
Lysates/proteins: 25 μ g per lane.
Blocking buffer: 3% nonfat dry milk in TBST.
Detection: ECL Basic Kit (RM00020).
Exposure time: 10s.