

Rabbit IgG isotype control

Catalog No.: AC042 **9 Publications**

Basic Information

Observed MW

Calculated MW

Category

Loading control antibody

Applications

WB, IHC-P, IF/ICC, FC, ChIP, ELISA

Cross-Reactivity

CloneNo number

ARC5105-03

Background

The protein encoded by this gene is a transcriptional regulator and tumor suppressor, serving as an activator of genes involved in both innate and acquired immune responses.

Recommended Dilutions

WB 1:5000 - 1:10000

IHC-P 1:50 - 1:200

IF/ICC 1:50 - 1:200

ChIP 3µg antibody for
10µg-15µg of Chromatin

ELISA Recommended starting
concentration is 1 µg/mL.
Please optimize the
concentration based on
your specific assay
requirements.

Immunogen Information

Gene ID

Swiss Prot

Immunogen

This information is considered to be commercially sensitive.

Synonyms

Product Information

Source

Rabbit

Isotype

IgG

Purification

Protein A/G purification

Storage

Store at -20°C. Avoid freeze / thaw cycles.

Buffer: PBS with 0.09% sodium azide, 0.05% BSA, 50% glycerol, pH7.3.

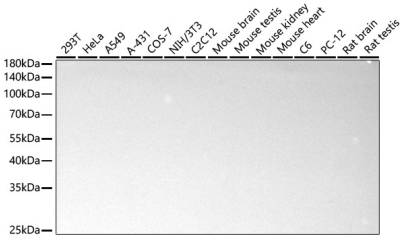
Contact

☎ | 400-999-6126

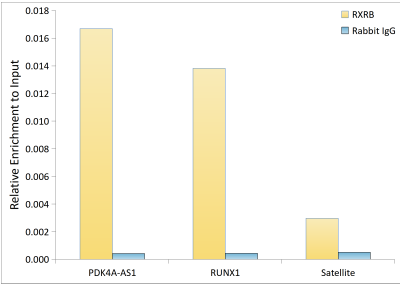
✉ | cn.market@abclonal.com.cn

🌐 | www.abclonal.com.cn

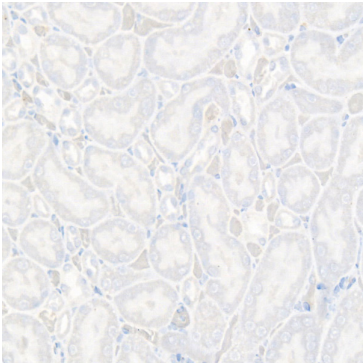
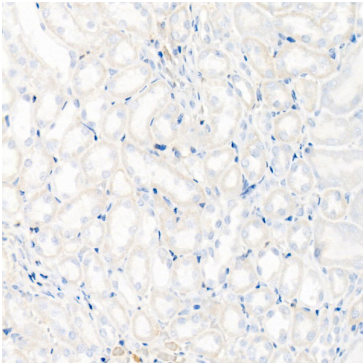
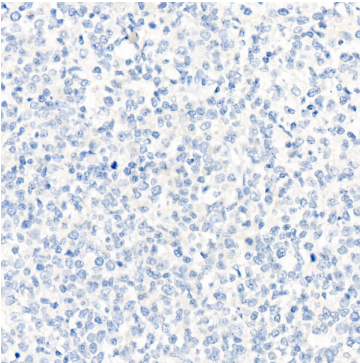
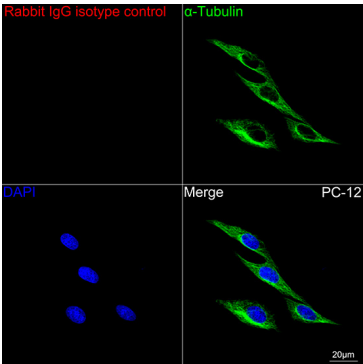
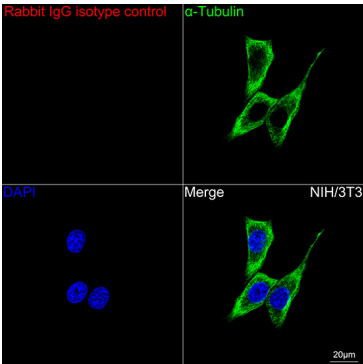
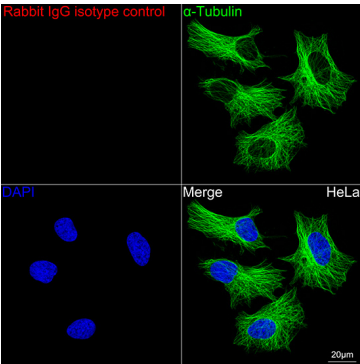
Validation Data



Western blot analysis of various lysates using Rabbit IgG isotype control (AC042) at 1:10000 dilution incubated at room temperature for 1.5 hours.
Secondary antibody: () at 1:10000 dilution.
Lysates/proteins: 25 µg per lane.
Blocking buffer: 3% nonfat dry milk in TBST.
Detection: ECL Basic Kit (RM00020).
Exposure time: 90s.



Chromatin immunoprecipitation was performed with 15 µg of cross-linked chromatin from HeLa cells transfected with a RXRB expression vector containing a single C-terminal flag-Tag, using 3 µg of Rabbit IgG isotype control (AC042) and RXRB Rabbit mAb (A25648). The enrichment of immunoprecipitated DNA at different genomic loci was examined by quantitative PCR. The histogram compares the ratio of the immunoprecipitated DNA to the input at given loci.

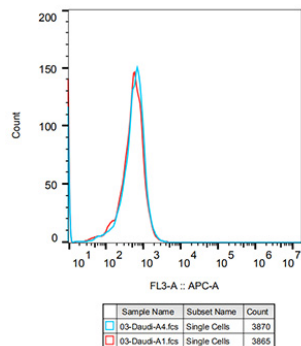


Validation Data

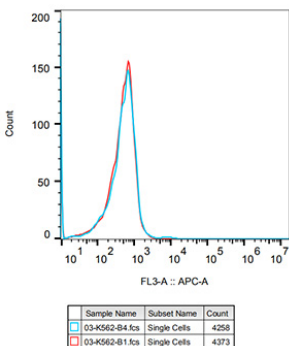
Immunohistochemistry analysis of paraffin-embedded Human tonsil using Rabbit IgG isotype control (AC042) at dilution of 1:100 (40x lens). High pressure antigen retrieval performed with 0.01M Citrate buffer (pH 6.0) prior to IHC staining.

Immunohistochemistry analysis of paraffin-embedded Mouse kidney using Rabbit IgG isotype control (AC042) at dilution of 1:100 (40x lens). High pressure antigen retrieval performed with 0.01M Citrate buffer (pH 6.0) prior to IHC staining.

Immunohistochemistry analysis of paraffin-embedded Rat kidney using Rabbit IgG isotype control (AC042) at dilution of 1:100 (40x lens). High pressure antigen retrieval performed with 0.01M Citrate buffer (pH 6.0) prior to IHC staining.



Flow cytometry: Daudi cells were stained with Rabbit IgG isotype control(AC042, 10 µg/mL, blue line) followed by goat anti-Rabbit pAb APC(1:600 dilution) staining. Non-fluorescently stained Daudi cells was used as blank control (red line).



Flow cytometry: K562 cells were stained with Rabbit IgG isotype control(AC042, 10 µg/mL, blue line) followed by goat anti-Rabbit pAb APC(1:600 dilution) staining. Non-fluorescently stained K562 cells was used as blank control (red line).