

# HRP-conjugated GAPDH Mouse mAb

Catalog No.: AC035

39 Publications

## Basic Information

**Observed MW**

36kDa

**Calculated MW**

36kDa

**Category**

Loading control antibody

**Applications**

WB, ELISA

**Cross-Reactivity**

Human, Mouse, Rat

**CloneNo number**

AMC0062R

**Conjugate**

HRP

## Recommended Dilutions

**WB** 1:5000 - 1:40000**ELISA** Recommended starting concentration is 1 µg/mL. Please optimize the concentration based on your specific assay requirements.

## Background

This gene encodes a member of the glyceraldehyde-3-phosphate dehydrogenase protein family. The encoded protein has been identified as a moonlighting protein based on its ability to perform mechanistically distinct functions. The product of this gene catalyzes an important energy-yielding step in carbohydrate metabolism, the reversible oxidative phosphorylation of glyceraldehyde-3-phosphate in the presence of inorganic phosphate and nicotinamide adenine dinucleotide (NAD). The encoded protein has additionally been identified to have uracil DNA glycosylase activity in the nucleus. Also, this protein contains a peptide that has antimicrobial activity against *E. coli*, *P. aeruginosa*, and *C. albicans*. Studies of a similar protein in mouse have assigned a variety of additional functions including nitrosylation of nuclear proteins, the regulation of mRNA stability, and acting as a transferrin receptor on the cell surface of macrophage. Many pseudogenes similar to this locus are present in the human genome. Alternative splicing results in multiple transcript variants.

## Immunogen Information

**Gene ID**

2597

**Swiss Prot**

P04406


**Immunogen**

Recombinant protein (or fragment). This information is considered to be commercially sensitive.

**Synonyms**

G3PD; GAPD; HEL-S-162eP; HRP-conjugated GAPDH

## Contact

 | 400-999-6126 | [cn.market@abclonal.com.cn](mailto:cn.market@abclonal.com.cn) | [www.abclonal.com.cn](http://www.abclonal.com.cn)

## Product Information

**Source**

Mouse

**Isotype**

IgG1, Kappa

**Purification**

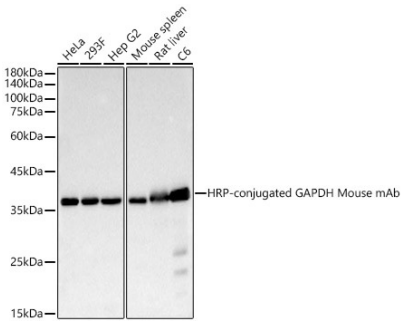
Affinity purification

**Storage**

Store at -20°C. Avoid freeze / thaw cycles.

Buffer: PBS containing 50% glycerol, preserved with proclin300 or sodium azide (as specified on the Certificate of Analysis), pH 7.3.

# Validation Data



Western blot analysis of various lysates, using HRP-conjugated GAPDH Mouse mAb (AC035) at 1:10000 dilution.  
Lysates/proteins: 25µg per lane.  
Blocking buffer: 3% nonfat dry milk in TBST.  
Detection: ECL Basic Kit (RM00020).  
Exposure time: 10s.