

β-Tubulin Mouse mAb

Catalog No.: AC021 **107 Publications**

Basic Information

Observed MW

50kDa

Calculated MW

50kDa

Category

Loading control antibody

Applications

WB,IHC-P,IF/ICC,IP,ELISA

Cross-Reactivity

Human, Mouse, Rat, Hamster, Monkey, Goat, Chlamydomonas Reinhardtii

CloneNo number

AMC0498

Background

This gene encodes a beta tubulin protein. This protein forms a dimer with alpha tubulin and acts as a structural component of microtubules. Mutations in this gene cause cortical dysplasia, complex, with other brain malformations 6. Alternative splicing results in multiple splice variants. There are multiple pseudogenes for this gene on chromosomes 1, 6, 7, 8, 9, and 13.

Recommended Dilutions

WB	1:5000 - 1:10000
IHC-P	1:50 - 1:200
IF/ICC	1:50 - 1:200
IP	0.5ug-4ug antibody for 200ug-400ug extracts of whole cells
ELISA	Recommended starting concentration is 1 µg/mL. Please optimize the concentration based on your specific assay requirements.

Contact

☎ | 400-999-6126

✉ | cn.market@abclonal.com.cn

🌐 | www.abclonal.com.cn

Immunogen Information

Gene ID

203068

Swiss Prot

P07437

Immunogen

Recombinant protein (or fragment). This information is considered to be commercially sensitive.

Synonyms

M40; TUBB1; TUBB5; CDCBM6; CSCSC1; OK/SW-cl.56; β-Tubulin

Product Information

Source

Mouse

Isotype

IgG1

Purification

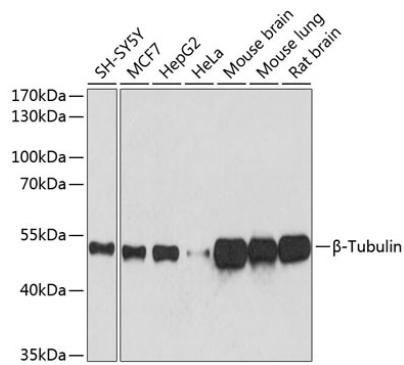
Affinity purification

Storage

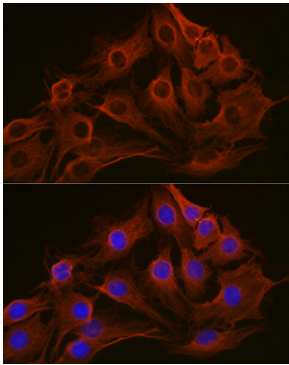
Store at -20°C. Avoid freeze / thaw cycles.

Buffer: PBS containing 50% glycerol and 1% BSA, preserved with proclin300 or sodium azide (as specified on the Certificate of Analysis), pH 7.3.

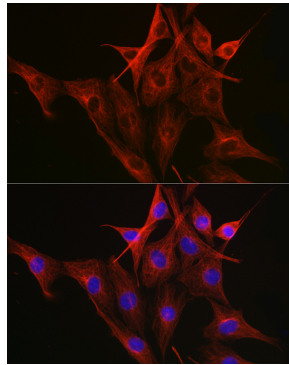
Validation Data



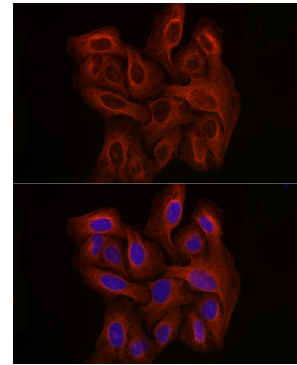
Western blot analysis of various lysates using β -Tubulin Mouse mAb (AC021) at 1:5000 dilution. Secondary antibody: HRP-conjugated Goat anti-Mouse IgG (H+L) (AS003) at 1:10000 dilution. Lysates/proteins: 25 μ g per lane. Blocking buffer: 3% nonfat dry milk in TBST. Detection: ECL Basic Kit (RM00020). Exposure time: 10s.



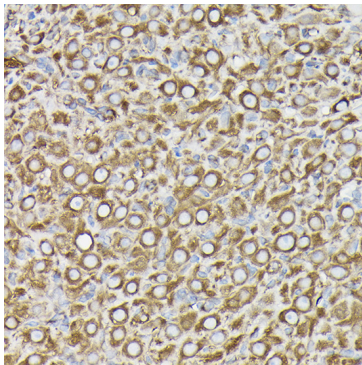
Immunofluorescence analysis of C6 cells using β -Tubulin Mouse mAb (AC021) at dilution of 1:100 (40x lens). Blue: DAPI for nuclear staining.



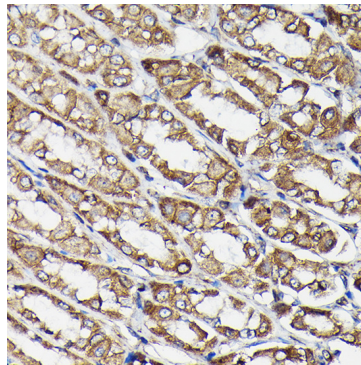
Immunofluorescence analysis of NIH-3T3 cells using β -Tubulin Mouse mAb (AC021) at dilution of 1:100 (40x lens). Blue: DAPI for nuclear staining.



Immunofluorescence analysis of U-2 OS cells using β -Tubulin Mouse mAb (AC021) at dilution of 1:100 (40x lens). Blue: DAPI for nuclear staining.



Immunohistochemistry analysis of paraffin-embedded Rat ovary using β -Tubulin Mouse mAb (AC021) at dilution of 1:100 (40x lens). High pressure antigen retrieval performed with 0.01M Citrate buffer (pH 6.0) prior to IHC staining.



Immunohistochemistry analysis of paraffin-embedded Rat stomach using β -Tubulin Mouse mAb (AC021) at dilution of 1:100 (40x lens). High pressure antigen retrieval performed with 0.01M Citrate buffer (pH 6.0) prior to IHC staining.