

β-Tubulin Mouse mAb

Catalog No.: AC010 **10 Publications**

Basic Information

Observed MW

55kDa

Calculated MW

50kDa

Category

Loading control antibody

Applications

WB,IHC-P,ELISA

Cross-Reactivity

Human, Mouse, Rat

CloneNo number

AMC0497

Background

This gene encodes a beta tubulin protein. This protein forms a dimer with alpha tubulin and acts as a structural component of microtubules. Mutations in this gene cause cortical dysplasia, complex, with other brain malformations 6. Alternative splicing results in multiple splice variants. There are multiple pseudogenes for this gene on chromosomes 1, 6, 7, 8, 9, and 13.

Recommended Dilutions

WB 1:2000 - 1:6000

IHC-P 1:200 - 1:500

ELISA Recommended starting concentration is 1 µg/mL. Please optimize the concentration based on your specific assay requirements.

Immunogen Information

Gene ID

203068

Swiss Prot

P07437

Immunogen

Recombinant protein (or fragment).This information is considered to be commercially sensitive.

Synonyms

M40; TUBB1; TUBB5; CDCBM6; CSCSC1; OK/SW-cl.56; β-Tubulin

Contact

☎ | 400-999-6126

✉ | cn.market@abclonal.com.cn

🌐 | www.abclonal.com.cn

Product Information

Source

Mouse

Isotype

IgG1

Purification

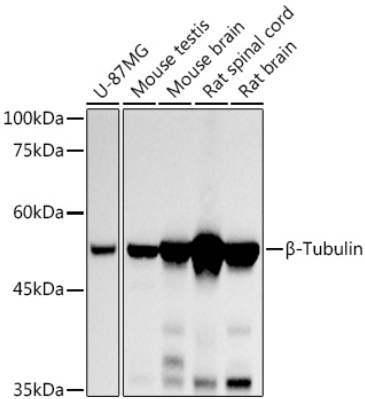
Affinity purification

Storage

Store at -20°C. Avoid freeze / thaw cycles.

Buffer: PBS with 0.02% sodium azide,50% glycerol,pH7.3.

Validation Data



Western blot analysis of various lysates using β -Tubulin Mouse mAb (AC010) at 1:5000 dilution.
Secondary antibody: HRP-conjugated Goat anti-Mouse IgG (H+L) (AS003) at 1:10000 dilution.
Lysates/proteins: 25 μ g per lane.
Blocking buffer: 3% nonfat dry milk in TBST.
Detection: ECL Basic Kit (RM00020).
Exposure time: 1s.