

# $\beta$ -Tubulin Rabbit pAb

Catalog No.: AC008 **183 Publications**

## Basic Information

### Observed MW

55kDa

### Calculated MW

50kDa

### Category

Loading control antibody

### Applications

WB,IHC-P,IF/ICC

### Cross-Reactivity

Human, Mouse, Rat

## Background

This gene encodes a beta tubulin protein. This protein forms a dimer with alpha tubulin and acts as a structural component of microtubules. Mutations in this gene cause cortical dysplasia, complex, with other brain malformations 6. Alternative splicing results in multiple splice variants. There are multiple pseudogenes for this gene on chromosomes 1, 6, 7, 8, 9, and 13.

## Recommended Dilutions

WB	1:2000 - 1:10000
IHC-P	1:50 - 1:200
IF/ICC	1:50 - 1:200

## Immunogen Information

### Gene ID

203068

### Swiss Prot

P07437

### Immunogen

Recombinant protein (or fragment). This information is considered to be commercially sensitive.

### Synonyms

M40; TUBB1; TUBB5; CDCBM6; CSCSC1; OK/SW-cl.56;  $\beta$ -Tubulin

## Contact

☎	400-999-6126
✉	cn.market@abclonal.com.cn
🌐	www.abclonal.com.cn

## Product Information

### Source

Rabbit

### Isotype

IgG

### Purification

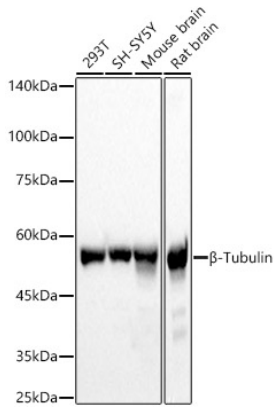
Affinity purification

### Storage

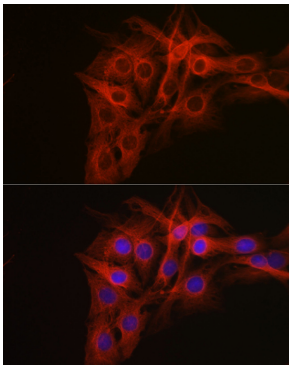
Store at -20°C. Avoid freeze / thaw cycles.

Buffer: PBS with 0.09% Sodium azide, 50% glycerol, pH7.3.

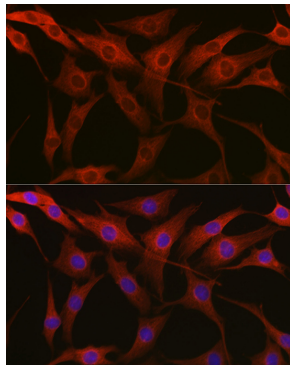
## Validation Data



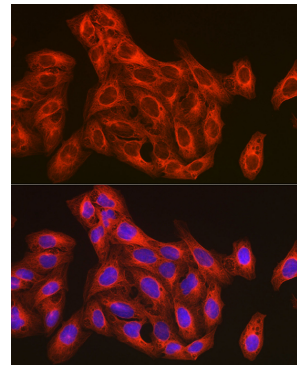
Western blot analysis of various lysates, using  $\beta$ -Tubulin Rabbit pAb (AC008) at 1:2000 dilution. Secondary antibody: HRP-conjugated Goat anti-Rabbit IgG (H+L) (AS014) at 1:10000 dilution. Lysates/proteins: 25 $\mu$ g per lane. Blocking buffer: 3% nonfat dry milk in TBST. Detection: ECL Basic Kit (RM00020). Exposure time: 1s.



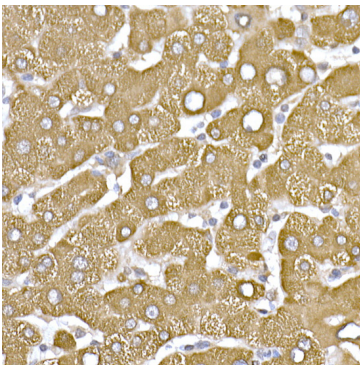
Immunofluorescence analysis of C6 cells using  $\beta$ -Tubulin Rabbit pAb (AC008) at dilution of 1:100 (40x lens). Secondary antibody: Cy3-conjugated Goat anti-Rabbit IgG (H+L) (AS007) at 1:500 dilution. Blue: DAPI for nuclear staining.



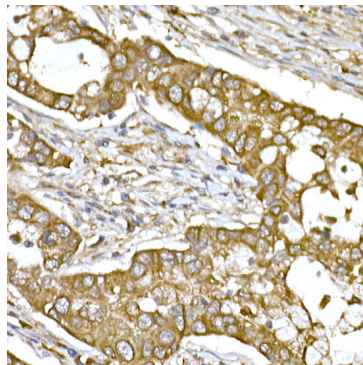
Immunofluorescence analysis of NIH-3T3 cells using  $\beta$ -Tubulin Rabbit pAb (AC008) at dilution of 1:100 (40x lens). Secondary antibody: Cy3-conjugated Goat anti-Rabbit IgG (H+L) (AS007) at 1:500 dilution. Blue: DAPI for nuclear staining.



Immunofluorescence analysis of U-2 OS cells using  $\beta$ -Tubulin Rabbit pAb (AC008) at dilution of 1:100 (40x lens). Secondary antibody: Cy3-conjugated Goat anti-Rabbit IgG (H+L) (AS007) at 1:500 dilution. Blue: DAPI for nuclear staining.



Immunohistochemistry analysis of paraffin-embedded Human liver using  $\beta$ -Tubulin Rabbit pAb (AC008) at dilution of 1:200 (40x lens). High pressure antigen retrieval performed with 0.01M Citrate buffer (pH 6.0) prior to IHC staining.



Immunohistochemistry analysis of paraffin-embedded Human lung cancer using  $\beta$ -Tubulin Rabbit pAb (AC008) at dilution of 1:200 (40x lens). High pressure antigen retrieval performed with 0.01M Citrate buffer (pH 6.0) prior to IHC staining.