

# $\alpha$ -Tubulin Rabbit pAb

Catalog No.: AC007 **57 Publications**

## Basic Information

### Observed MW

55kDa

### Calculated MW

50kDa

### Category

Loading control antibody

### Applications

WB,IF/ICC

### Cross-Reactivity

Human, Mouse, Rat

## Background

Microtubules of the eukaryotic cytoskeleton perform essential and diverse functions and are composed of a heterodimer of alpha and beta tubulin. The genes encoding these microtubule constituents are part of the tubulin superfamily, which is composed of six distinct families. Genes from the alpha, beta and gamma tubulin families are found in all eukaryotes. The alpha and beta tubulins represent the major components of microtubules, while gamma tubulin plays a critical role in the nucleation of microtubule assembly. There are multiple alpha and beta tubulin genes and they are highly conserved among and between species. This gene encodes an alpha tubulin that is a highly conserved homolog of a rat testis-specific alpha tubulin. Alternatively spliced transcript variants encoding different isoforms have been found for this gene.

## Recommended Dilutions

<b>WB</b>	1:500 - 1:4000
<b>IF/ICC</b>	1:50 - 1:200

## Immunogen Information

### Gene ID

7277

### Swiss Prot

P68366

### Immunogen

This information is considered to be commercially sensitive.

### Synonyms

ALS22; TUBA1; H2-ALPHA;  $\alpha$ -Tubulin

## Contact

☎ | 400-999-6126

✉ | [cn.market@abclonal.com.cn](mailto:cn.market@abclonal.com.cn)

🌐 | [www.abclonal.com.cn](http://www.abclonal.com.cn)

## Product Information

### Source

Rabbit

### Isotype

IgG

### Purification

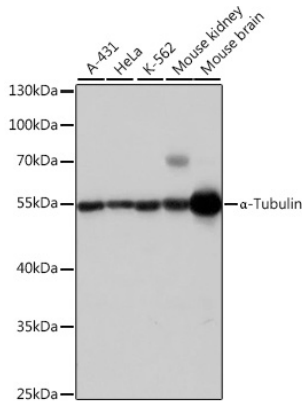
Affinity purification

### Storage

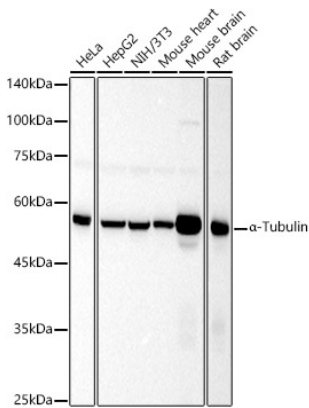
Store at -20°C. Avoid freeze / thaw cycles.

Buffer: PBS containing 50% glycerol, preserved with proclin300 or sodium azide (as specified on the Certificate of Analysis), pH 7.3.

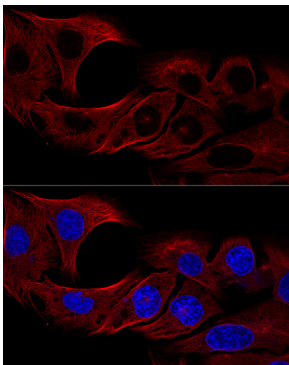
## Validation Data



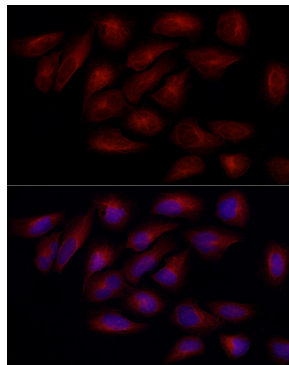
Western blot analysis of various lysates using  $\alpha$ -Tubulin Rabbit pAb (AC007) at 1:1000 dilution. Secondary antibody: HRP-conjugated Goat anti-Rabbit IgG (H+L) (AS014) at 1:10000 dilution. Lysates/proteins: 25 $\mu$ g per lane. Blocking buffer: 3% nonfat dry milk in TBST. Detection: ECL Basic Kit (RM00020). Exposure time: 1s.



Western blot analysis of various lysates, using  $\alpha$ -Tubulin Rabbit pAb (AC007) at 1:1000 dilution. Secondary antibody: HRP-conjugated Goat anti-Rabbit IgG (H+L) (AS014) at 1:10000 dilution. Lysates/proteins: 25 $\mu$ g per lane. Blocking buffer: 3% nonfat dry milk in TBST. Detection: ECL Basic Kit (RM00020). Exposure time: 30s.



Confocal immunofluorescence analysis of U2OS cells using  $\alpha$ -Tubulin Rabbit pAb (AC007) at dilution of 1:100 (60x lens). Blue: DAPI for nuclear staining.



Immunofluorescence analysis of U2OS cells using  $\alpha$ -Tubulin Rabbit pAb (AC007) at dilution of 1:100 (40x lens). Secondary antibody: Cy3-conjugated Goat anti-Rabbit IgG (H+L) (AS007) at 1:500 dilution. Blue: DAPI for nuclear staining.