

SUPV3L1 Rabbit pAb

Catalog No.: A9951 **1 Publications**

Basic Information

Observed MW

88kDa

Calculated MW

88kDa

Category

Primary antibody

Applications

WB,IF/ICC,ELISA

Cross-Reactivity

Human, Mouse, Rat

Background

Enables helicase activity; nucleic acid binding activity; and protein homodimerization activity. Involved in several processes, including mitochondrial RNA metabolic process; mitochondrion morphogenesis; and positive regulation of mitochondrial RNA catabolic process. Located in mitochondrial nucleoid and nucleus. Part of mitochondrial degradosome.

Recommended Dilutions

WB 1:1000 - 1:4000

IF/ICC 1:50 - 1:200

ELISA Recommended starting concentration is 1 µg/mL. Please optimize the concentration based on your specific assay requirements.

Immunogen Information

Gene ID

6832

Swiss Prot

Q8IYB8

Immunogen

Recombinant protein (or fragment). This information is considered to be commercially sensitive.

Synonyms

SUV3; SUPV3L1

Contact

☎ | 400-999-6126

✉ | cn.market@abclonal.com.cn

🌐 | www.abclonal.com.cn

Product Information

Source

Rabbit

Isotype

IgG

Purification

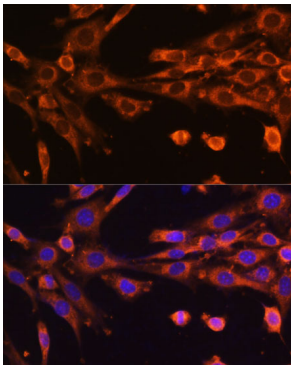
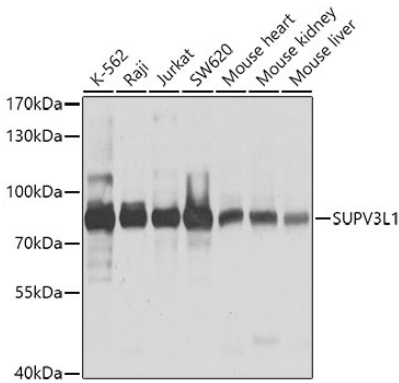
Affinity purification

Storage

Store at -20°C. Avoid freeze / thaw cycles.

Buffer: PBS with 0.02% sodium azide, 50% glycerol, pH7.3.

Validation Data



Immunofluorescence analysis of NIH-3T3 cells using SUPV3L1 Rabbit pAb (A9951) at dilution of 1:100 (40x lens). Secondary antibody: Cy3-conjugated Goat anti-Rabbit IgG (H+L) (AS007) at 1:500 dilution. Blue: DAPI for nuclear staining.