

# STIM1 Rabbit mAb

Catalog No.: A9764

Recombinant

1 Publications

## Basic Information

**Observed MW**

85kDa

**Calculated MW**

77kDa

**Category**

Primary antibody

**Applications**

WB, ELISA

**Cross-Reactivity**

Human, Mouse, Rat

**CloneNo number**

ARC1738

## Background

This gene encodes a type 1 transmembrane protein that mediates  $\text{Ca}^{2+}$  influx after depletion of intracellular  $\text{Ca}^{2+}$  stores by gating of store-operated  $\text{Ca}^{2+}$  influx channels (SOCs). It is one of several genes located in the imprinted gene domain of 11p15.5, an important tumor-suppressor gene region. Alterations in this region have been associated with the Beckwith-Wiedemann syndrome, Wilms tumor, rhabdomyosarcoma, adrenocortical carcinoma, and lung, ovarian, and breast cancer. This gene may play a role in malignancies and disease that involve this region, as well as early hematopoiesis, by mediating attachment to stromal cells. Mutations in this gene are associated with fatal classic Kaposi sarcoma, immunodeficiency due to defects in store-operated calcium entry (SOCE) in fibroblasts, ectodermal dysplasia and tubular aggregate myopathy. This gene is oriented in a head-to-tail configuration with the ribonucleotide reductase 1 gene (RRM1), with the 3' end of this gene situated 1.6 kb from the 5' end of the RRM1 gene. Alternative splicing of this gene results in multiple transcript variants.

## Recommended Dilutions

**WB** 1:500 - 1:1000**ELISA** Recommended starting concentration is 1  $\mu\text{g/mL}$ . Please optimize the concentration based on your specific assay requirements.

## Immunogen Information

**Gene ID**

6786

**Swiss Prot**

Q13586

**Immunogen**

Synthetic peptide. This information is considered to be commercially sensitive.

**Synonyms**

GOK; TAM; TAM1; IMD10; STRMK; D11S4896E; STIM1

## Contact

 | 400-999-6126 | [cn.market@abclonal.com.cn](mailto:cn.market@abclonal.com.cn) | [www.abclonal.com.cn](http://www.abclonal.com.cn)

## Product Information

**Source**

Rabbit

**Isotype**

IgG

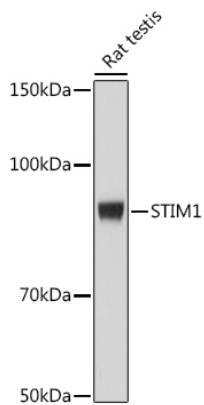
**Purification**

Affinity purification

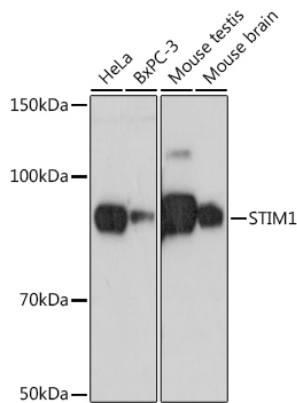
**Storage**Store at  $-20^{\circ}\text{C}$ . Avoid freeze / thaw cycles.

Buffer: PBS with 0.02% sodium azide, 0.05% BSA, 50% glycerol, pH7.3.

Validation Data



Western blot analysis of lysates from Rat testis , using STIM1 Rabbit mAb (A9764) at 1:500 dilution.  
Secondary antibody: HRP-conjugated Goat anti-Rabbit IgG (H+L) (AS014) at 1:10000 dilution.  
Lysates/proteins: 25µg per lane.  
Blocking buffer: 3% nonfat dry milk in TBST.  
Detection: ECL Basic Kit (RM00020).  
Exposure time: 3s.



Western blot analysis of various lysates using STIM1 Rabbit mAb (A9764) at 1:500 dilution.  
Secondary antibody: HRP-conjugated Goat anti-Rabbit IgG (H+L) (AS014) at 1:10000 dilution.  
Lysates/proteins: 25µg per lane.  
Blocking buffer: 3% nonfat dry milk in TBST.  
Detection: ECL Basic Kit (RM00020).  
Exposure time: 90s.