

# alpha 1 Spectrin Rabbit mAb

Catalog No.: A9597 **Recombinant**

## Basic Information

### Observed MW

280kDa

### Calculated MW

280kDa

### Category

Primary antibody

### Applications

WB,ELISA

### Cross-Reactivity

Human, Mouse, Rat

### CloneNo number

ARC1650

## Background

This gene encodes a member of a family of molecular scaffold proteins that link the plasma membrane to the actin cytoskeleton and functions in the determination of cell shape, arrangement of transmembrane proteins, and organization of organelles. The encoded protein is primarily composed of 22 spectrin repeats which are involved in dimer formation. It forms a component of the erythrocyte plasma membrane. Mutations in this gene result in a variety of hereditary red blood cell disorders, including elliptocytosis-2, pyropoikilocytosis, and spherocytosis, type 3.

## Recommended Dilutions

**WB** 1:500 - 1:1000

**ELISA** Recommended starting concentration is 1 µg/mL. Please optimize the concentration based on your specific assay requirements.

## Immunogen Information

### Gene ID

6708

### Swiss Prot

P02549

### Immunogen

Synthetic peptide. This information is considered to be commercially sensitive.

### Synonyms

EL2; HPP; HS3; SPH3; SPTA; alpha 1 Spectrin

## Contact

☎ | 400-999-6126

✉ | [cn.market@abclonal.com.cn](mailto:cn.market@abclonal.com.cn)

🌐 | [www.abclonal.com.cn](http://www.abclonal.com.cn)

## Product Information

### Source

Rabbit

### Isotype

IgG

### Purification

Affinity purification

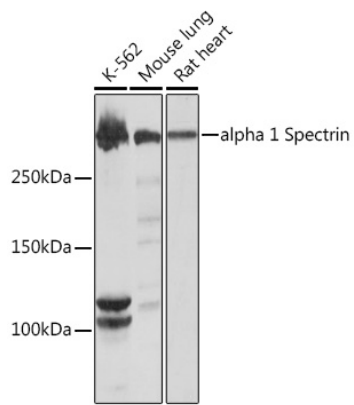
### Storage

Store at -20°C. Avoid freeze / thaw cycles.

Buffer: PBS containing 50% glycerol and 0.05% BSA, preserved with proclin300 or sodium azide (as specified on the Certificate of Analysis), pH 7.3.

## Validation Data

---



Western blot analysis of various lysates using alpha 1 Spectrin Rabbit mAb (A9597) at 1:1000 dilution.  
Secondary antibody: HRP-conjugated Goat anti-Rabbit IgG (H+L) (AS014) at 1:10000 dilution.  
Lysates/proteins: 25µg per lane.  
Blocking buffer: 3% nonfat dry milk in TBST.  
Detection: ECL Basic Kit (RM00020).  
Exposure time: 10s.