

RPS20 Rabbit mAb

Catalog No.: A9551 **Recombinant**

Basic Information

Observed MW

16kDa

Calculated MW

13kDa

Category

Primary antibody

Applications

WB, IHC-P, IF/ICC, IP, ELISA

Cross-Reactivity

Human, Mouse, Rat

CloneNo number

ARC1630

Background

Ribosomes, the organelles that catalyze protein synthesis, consist of a small 40S subunit and a large 60S subunit. Together these subunits are composed of 4 RNA species and approximately 80 structurally distinct proteins. This gene encodes a ribosomal protein that is a component of the 40S subunit. The protein belongs to the S10P family of ribosomal proteins. It is located in the cytoplasm. This gene is co-transcribed with the small nucleolar RNA gene U54, which is located in its second intron. As is typical for genes encoding ribosomal proteins, there are multiple processed pseudogenes of this gene dispersed through the genome. Two transcript variants encoding different isoforms have been identified for this gene.

Recommended Dilutions

WB 1:500 - 1:1000**IHC-P** 1:500 - 1:1000**IF/ICC** 1:50 - 1:200**IP** 0.5µg-4µg antibody for
200µg-400µg extracts of
whole cells**ELISA** Recommended starting
concentration is 1 µg/mL.
Please optimize the
concentration based on
your specific assay
requirements.

Immunogen Information

Gene ID

6224

Swiss Prot

P60866

Immunogen

Synthetic peptide. This information is considered to be commercially sensitive.

Synonyms

S20; uS10; RPS20

Product Information

Source

Rabbit

Isotype

IgG

Purification



Affinity purification

Storage

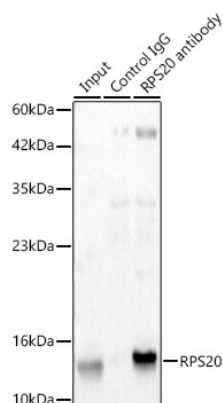
Store at -20°C. Avoid freeze / thaw cycles.

Buffer: PBS containing 50% glycerol and 0.05% BSA, preserved with proclin300 or sodium azide (as specified on the Certificate of Analysis), pH 7.3.

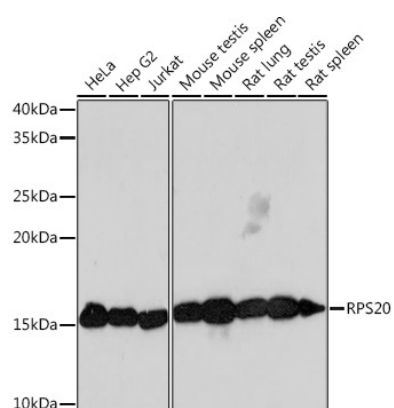
Contact

 | 400-999-6126 | cn.market@abclonal.com.cn | www.abclonal.com.cn

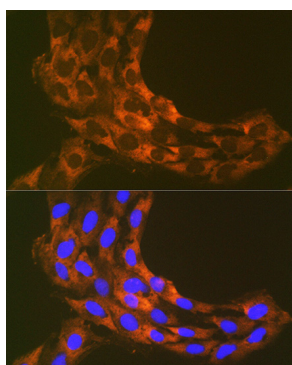
Validation Data



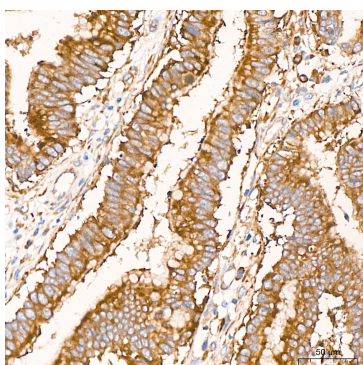
Immunoprecipitation of RPS20 in 300 µg extracts from Hep G2 cells using 3 µg RPS20 Rabbit mAb (A9551). Western blot analysis was performed using RPS20 Rabbit mAb (A9551) at 1:1000 dilution.



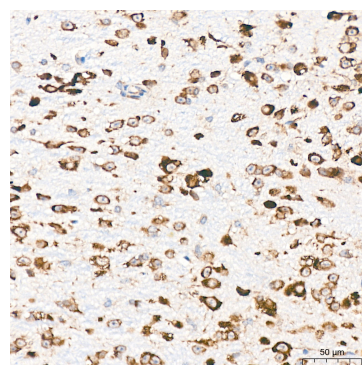
Western blot analysis of various lysates using RPS20 Rabbit mAb (A9551) at 1:1000 dilution. Secondary antibody: HRP-conjugated Goat anti-Rabbit IgG (H+L) (AS014) at 1:10000 dilution. Lysates/proteins: 25µg per lane. Blocking buffer: 3% nonfat dry milk in TBST. Detection: ECL Basic Kit (RM00020). Exposure time: 3min.



Immunofluorescence analysis of C6 cells using RPS20 Rabbit mAb (A9551) at dilution of 1:100 (40x lens). Secondary antibody: Cy3-conjugated Goat anti-Rabbit IgG (H+L) (AS007) at 1:500 dilution. Blue: DAPI for nuclear staining.

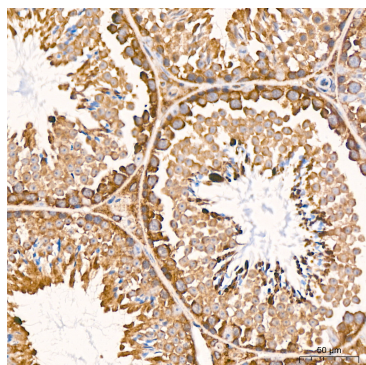


Immunohistochemistry analysis of paraffin-embedded Human colon carcinoma tissue using RPS20 Rabbit mAb (A9551) at a dilution of 1:800 (40x lens). High pressure antigen retrieval performed with 0.01M Citrate buffer (pH 6.0) prior to IHC staining.

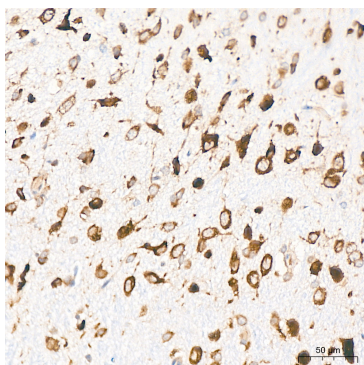


Immunohistochemistry analysis of paraffin-embedded Mouse brain tissue using RPS20 Rabbit mAb (A9551) at a dilution of 1:800 (40x lens). High pressure antigen retrieval performed with 0.01M Citrate buffer (pH 6.0) prior to IHC staining.

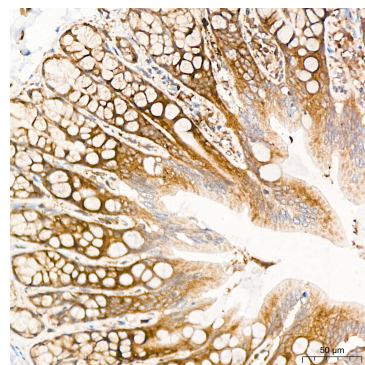
Validation Data



Immunohistochemistry analysis of paraffin-embedded Mouse testis tissue using RPS20 Rabbit mAb (A9551) at a dilution of 1:800 (40x lens). High pressure antigen retrieval performed with 0.01M Citrate buffer (pH 6.0) prior to IHC staining.



Immunohistochemistry analysis of paraffin-embedded Rat brain tissue using RPS20 Rabbit mAb (A9551) at a dilution of 1:800 (40x lens). High pressure antigen retrieval performed with 0.01M Citrate buffer (pH 6.0) prior to IHC staining.



Immunohistochemistry analysis of paraffin-embedded Rat colon tissue using RPS20 Rabbit mAb (A9551) at a dilution of 1:800 (40x lens). High pressure antigen retrieval performed with 0.01M Citrate buffer (pH 6.0) prior to IHC staining.