

Cortactin Rabbit mAb

Catalog No.: A9518

Recombinant

2 Publications

Basic Information

Observed MW

80-85kDa

Calculated MW

62kDa

Category

Primary antibody

Applications

WB,IP,IF-P,IHC-P,ELISA

Cross-Reactivity

Human, Mouse, Rat

CloneNo number

ARC1613

Background

This gene is overexpressed in breast cancer and squamous cell carcinomas of the head and neck. The encoded protein is localized in the cytoplasm and in areas of the cell-substratum contacts. This gene has two roles: (1) regulating the interactions between components of adherens-type junctions and (2) organizing the cytoskeleton and cell adhesion structures of epithelia and carcinoma cells. During apoptosis, the encoded protein is degraded in a caspase-dependent manner. The aberrant regulation of this gene contributes to tumor cell invasion and metastasis. Three splice variants that encode different isoforms have been identified for this gene.

Recommended Dilutions

WB 1:1000 - 1:6000

IP 0.5µg-4µg antibody for
400µg-600µg extracts of
whole cells

IF-P 1:200 - 1:800

IHC-P 1:200 - 1:800

ELISA Recommended starting
concentration is 1 µg/mL.
Please optimize the
concentration based on
your specific assay
requirements.

Immunogen Information

Gene ID

2017

Swiss Prot

Q14247

Immunogen

Synthetic peptide. This information is considered to be commercially sensitive.

Synonyms

EMS1; Cortactin

Product Information

Source

Rabbit

Isotype

IgG

Purification

Affinity purification

Storage

Store at -20°C. Avoid freeze / thaw cycles.

Buffer: PBS containing 50% glycerol and 0.05% BSA, preserved with proclin300 or sodium azide (as specified on the Certificate of Analysis), pH 7.3.

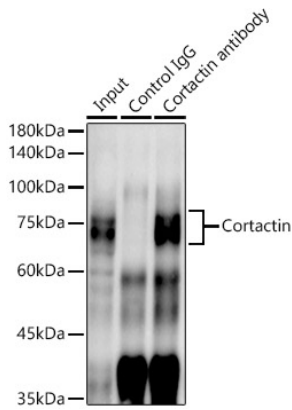
Contact

☎ | 400-999-6126

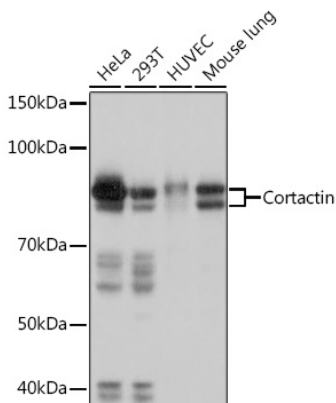
✉ | cn.market@abclonal.com.cn

🌐 | www.abclonal.com.cn

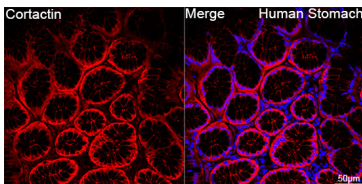
Validation Data



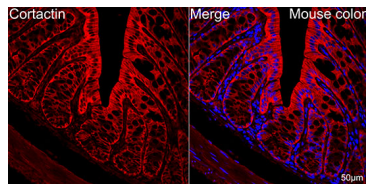
Immunoprecipitation analysis of 600 μ g extracts of Mouse lung cells using 3 μ g Cortactin antibody (A9518). Western blot was performed from the immunoprecipitate using Cortactin antibody (A9518) at a dilution of 1:1000.



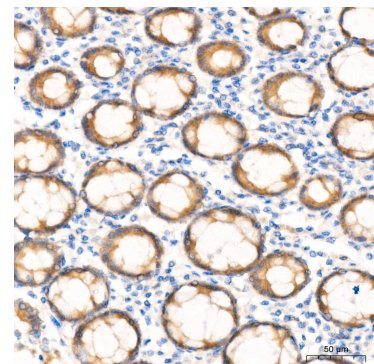
Western blot analysis of various lysates using Cortactin Rabbit mAb (A9518) at 1:1000 dilution. Secondary antibody: HRP-conjugated Goat anti-Rabbit IgG (H+L) (AS014) at 1:10000 dilution. Lysates/proteins: 25 μ g per lane. Blocking buffer: 3% nonfat dry milk in TBST. Detection: ECL Basic Kit (RM00020). Exposure time: 3s.



Confocal imaging of paraffin-embedded Human stomach tissue using Cortactin Rabbit mAb (A9518, dilution 1:200) followed by a further incubation with Cy3 Goat Anti-Rabbit IgG (H+L) (AS007, dilution 1:500) (Red). DAPI was used for nuclear staining (Blue). Objective: 40x. Perform high pressure antigen retrieval with 0.01 M citrate buffer (pH 6.0) prior to IF staining.



Confocal imaging of paraffin-embedded Mouse colon tissue using Cortactin Rabbit mAb (A9518, dilution 1:200) followed by a further incubation with Cy3 Goat Anti-Rabbit IgG (H+L) (AS007, dilution 1:500) (Red). DAPI was used for nuclear staining (Blue). Objective: 40x. Perform high pressure antigen retrieval with 0.01 M citrate buffer (pH 6.0) prior to IF staining.



Immunohistochemistry analysis of paraffin-embedded Human colon tissue using Cortactin Rabbit mAb (A9518) at a dilution of 1:200 (40x lens). High pressure antigen retrieval performed with 0.01M Tris-EDTA Buffer (pH 9.0) prior to IHC staining.