

ALS2CR1 Rabbit mAb

Catalog No.: A9434 **Recombinant**

Basic Information

Observed MW

42 kDa

Calculated MW

42 kDa

Category

Primary antibody

Applications

WB, ELISA

Cross-Reactivity

Human

CloneNo number

ARC2775

Background

Enables identical protein binding activity. Involved in positive regulation of transcription, DNA-templated. Located in cytoplasm.

Recommended Dilutions

WB 1: 1000-1: 2000

ELISA Recommended starting concentration is 1 µg/mL. Please optimize the concentration based on your specific assay requirements.

Immunogen Information

Gene ID

60491

Swiss Prot

Q9GZT8

Immunogen

Synthetic peptide. This information is considered to be commercially sensitive.

Synonyms

CALS-7; MDS015; ALS2CR1

Contact

☎ | 400-999-6126

✉ | cn.market@abclonal.com.cn

🌐 | www.abclonal.com.cn

Product Information

Source

Rabbit

Isotype

IgG

Purification

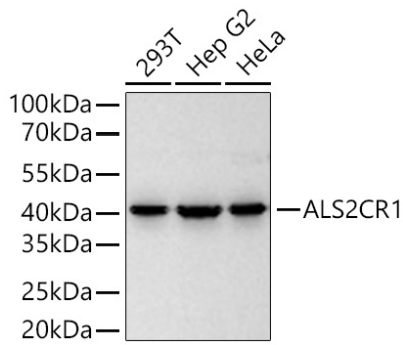
Affinity purification

Storage

Store at -20°C. Avoid freeze / thaw cycles.

Buffer: PBS containing 50% glycerol and 0.05% BSA, preserved with proclin300 or sodium azide (as specified on the Certificate of Analysis), pH 7.3.

Validation Data



Western blot analysis of various lysates using ALS2CR1 Rabbit mAb (A9434) at 2000 dilution incubated overnight at 4°C.

Secondary antibody: HRP-conjugated Goat anti-Rabbit IgG (H+L) (AS014) at 1:10000 dilution.

Lysates/proteins: 25 µg per lane.

Blocking buffer: 3% nonfat dry milk in TBST.

Detection: ECL Basic Kit (RM00020).

Exposure time: 45 s.