

CCDC98 Rabbit mAb

Catalog No.: A9421 **Recombinant**

Basic Information

Observed MW

47kDa

Calculated MW

47kDa

Category

Primary antibody

Applications

WB,IP,ELISA

Cross-Reactivity

Human

CloneNo number

ARC2760

Background

This gene encodes a protein that binds to the C-terminal repeats of breast cancer 1 (BRCA1) through a phospho-SXXF motif. The encoded protein recruits ubiquitin interaction motif containing 1 protein to BRCA1 protein and is required for DNA damage resistance, DNA repair, and cell cycle checkpoint control. Pseudogenes of this gene are found on chromosomes 3 and 8. Alternative splicing results in multiple transcript variants.

Recommended Dilutions

WB 1:500 - 1:1000

IP 0.5µg-4µg antibody for
200µg-400µg extracts of
whole cells

ELISA Recommended starting
concentration is 1 µg/mL.
Please optimize the
concentration based on
your specific assay
requirements.

Immunogen Information

Gene ID

84142

Swiss Prot

Q6UWZ7

Immunogen

Synthetic peptide. This information is considered to be commercially sensitive.

Synonyms

ABRA1; CCDC98; FAM175A

Contact

☎ | 400-999-6126

✉ | cn.market@abclonal.com.cn

🌐 | www.abclonal.com.cn

Product Information

Source

Rabbit

Isotype

IgG

Purification

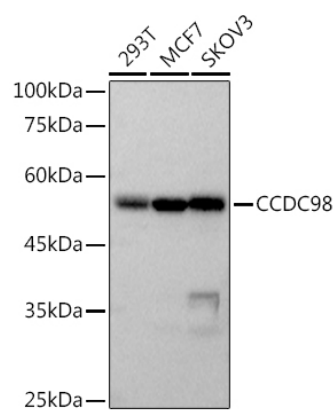
Affinity purification

Storage

Store at -20°C. Avoid freeze / thaw cycles.

Buffer: PBS with 0.02% sodium azide,0.05% BSA,50% glycerol,pH7.3.

Validation Data



Western blot analysis of various lysates, using CCDC98 Rabbit mAb (A9421) at 1:500 dilution. Secondary antibody: HRP-conjugated Goat anti-Rabbit IgG (H+L) (A5014) at 1:10000 dilution. Lysates/proteins: 25µg per lane. Blocking buffer: 3% nonfat dry milk in TBST. Detection: ECL Basic Kit (RM00020). Exposure time: 3s.