

NPY5R Rabbit mAb

Catalog No.: A9359 **Recombinant**

Basic Information

Observed MW

51kDa

Calculated MW

51kDa

Category

Primary antibody

Applications

WB,IF/ICC,ELISA

Cross-Reactivity

Human, Mouse, Rat

CloneNo number

ARC2758

Background

The protein encoded by this gene is a receptor for neuropeptide Y and peptide YY. The encoded protein appears to be involved in regulating food intake, with defects in this gene being associated with eating disorders. Also, the encoded protein is involved in a pathway that protects neuroblastoma cells from chemotherapy-induced cell death, providing a possible therapeutic target against neuroblastoma. Three transcript variants encoding the same protein have been found for this gene.

Recommended Dilutions

WB 1:500 - 1:1000

IF/ICC 1:50 - 1:200

ELISA Recommended starting concentration is 1 µg/mL. Please optimize the concentration based on your specific assay requirements.

Immunogen Information

Gene ID

4889

Swiss Prot

Q15761

Immunogen

Synthetic peptide. This information is considered to be commercially sensitive.

Synonyms

NPYR5; NPY5-R; NPY5-R; NPY5R

Contact

☎ | 400-999-6126

✉ | cn.market@abclonal.com.cn

🌐 | www.abclonal.com.cn

Product Information

Source

Rabbit

Isotype

IgG

Purification

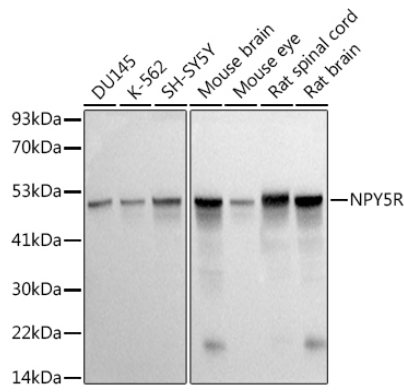
Affinity purification

Storage

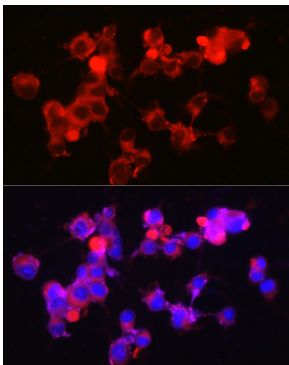
Store at -20°C. Avoid freeze / thaw cycles.

Buffer: PBS containing 50% glycerol and 0.05% BSA, preserved with proclin300 or sodium azide (as specified on the Certificate of Analysis), pH 7.3.

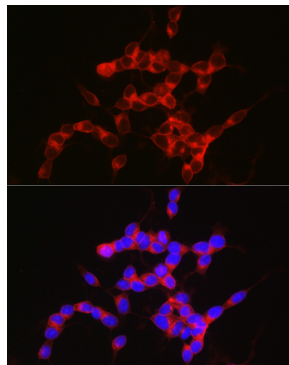
Validation Data



Western blot analysis of various lysates using (A9359) at 1:500 dilution. Secondary antibody: HRP-conjugated Goat anti-Rabbit IgG (H+L) (AS014) at 1:10000 dilution. Lysates/proteins: 25 µg per lane. Blocking buffer: 3% nonfat dry milk in TBST. Detection: ECL Basic Kit (RM00020). Exposure time: 0.5 s.



Immunofluorescence analysis of Neuro-2a cells using NPY5R Rabbit mAb (A9359) at dilution of 1:100 (40x lens). Secondary antibody: Cy3-conjugated Goat anti-Rabbit IgG (H+L) (AS007) at 1:500 dilution. Blue: DAPI for nuclear staining.



Immunofluorescence analysis of SH-SY5Y cells using NPY5R Rabbit mAb (A9359) at dilution of 1:100 (40x lens). Secondary antibody: Cy3-conjugated Goat anti-Rabbit IgG (H+L) (AS007) at 1:500 dilution. Blue: DAPI for nuclear staining.