

NCTR2 Rabbit mAb

Catalog No.: A9320 **Recombinant**

Basic Information

Observed MW

44kDa

Calculated MW

31kDa

Category

Primary antibody

Applications

WB, ELISA

Cross-Reactivity

Human

CloneNo number

ARC2719

Background

Predicted to enable signaling receptor activity. Predicted to be involved in cellular defense response and signal transduction. Predicted to be located in plasma membrane. Predicted to be integral component of plasma membrane. Predicted to be active in cell surface.

Recommended Dilutions

WB 1:500 - 1:1000

ELISA Recommended starting concentration is 1 µg/mL. Please optimize the concentration based on your specific assay requirements.

Immunogen Information

Gene ID

9436

Swiss Prot

O95944

Immunogen

Synthetic peptide. This information is considered to be commercially sensitive.

Synonyms

LY95; CD336; NKP44; NK-p44; dj149M18.1; NCTR2

Contact

☎ | 400-999-6126

✉ | cn.market@abclonal.com.cn

🌐 | www.abclonal.com.cn

Product Information

Source

Rabbit

Isotype

IgG

Purification

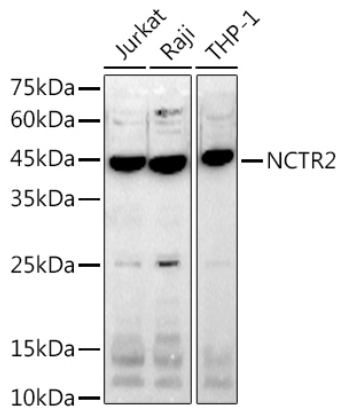
Affinity purification

Storage

Store at -20°C. Avoid freeze / thaw cycles.

Buffer: PBS containing 50% glycerol and 0.05% BSA, preserved with proclin300 or sodium azide (as specified on the Certificate of Analysis), pH 7.3.

Validation Data



Western blot analysis of various lysates using NCTR2 Rabbit mAb (A9320) at 1:1000 dilution.
Secondary antibody: HRP-conjugated Goat anti-Rabbit IgG (H+L) (AS014) at 1:10000 dilution.
Lysates/proteins: 25 µg per lane.
Blocking buffer: 3% nonfat dry milk in TBST.
Detection: ECL Basic Kit (RM00020).
Exposure time: 180 s.