

ALKBH1 Rabbit mAb

Catalog No.: A9221 **Recombinant**

Basic Information

Observed MW

44 kDa

Calculated MW

44 kDa

Category

Primary antibody

Applications

WB,IP,IHC-P,ELISA

Cross-Reactivity

Human, Mouse, Rat

CloneNo number

ARC2511

Background

This gene encodes a homolog to the E. coli alkB gene product. The E. coli alkB protein is part of the adaptive response mechanism of DNA alkylation damage repair. It is involved in damage reversal by oxidative demethylation of 1-methyladenine and 3-methylcytosine.

Recommended Dilutions

WB 1:1000 - 1:6000

IP 0.5µg-4µg antibody for
200µg-400µg extracts of
whole cells

IHC-P 1:200 - 1:2000

ELISA Recommended starting
concentration is 1 µg/mL.
Please optimize the
concentration based on
your specific assay
requirements.

Contact

☎ | 400-999-6126

✉ | cn.market@abclonal.com.cn

🌐 | www.abclonal.com.cn

Immunogen Information

Gene ID

8846

Swiss Prot

Q13686

Immunogen

Synthetic peptide. This information is considered to be commercially sensitive.

Synonyms

ABH; ABH1; alkB; hABH; ALKBH; ALKBH1

Product Information

Source

Rabbit

Isotype

IgG

Purification

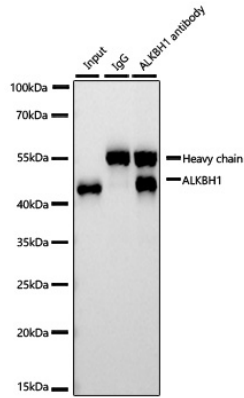
Affinity purification

Storage

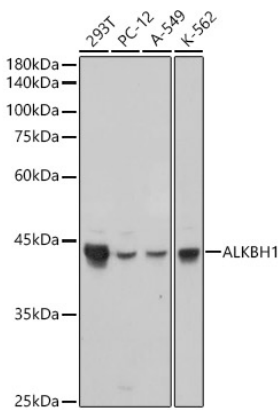
Store at -20°C. Avoid freeze / thaw cycles.

Buffer: PBS containing 50% glycerol and 0.05% BSA, preserved with proclin300 or sodium azide (as specified on the Certificate of Analysis), pH 7.3.

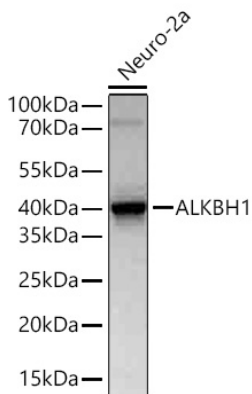
Validation Data



Immunoprecipitation of ALKBH1 from 300 µg extracts of A-549 cells was performed using 2 µg of ALKBH1 Rabbit mAb (A9221). Rabbit Control IgG (AC005) was used to precipitate the Control IgG sample. IP samples were eluted with 1X Laemmli Buffer. The Input lane represents 10% of the total input. Western blot analysis of immunoprecipitates was conducted using ALKBH1 Rabbit mAb (A9221) at a dilution of 1:1000.

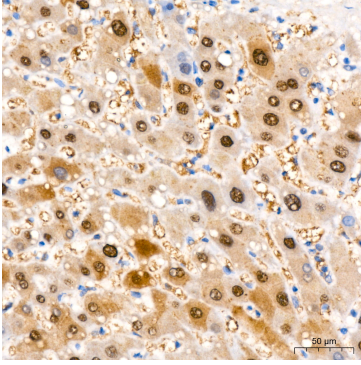


Western blot analysis of various lysates, using ALKBH1 Rabbit mAb (A9221) at 1:1000 dilution. Secondary antibody: HRP-conjugated Goat anti-Rabbit IgG (H+L) (AS014) at 1:10000 dilution. Lysates/proteins: 25µg per lane. Blocking buffer: 3% nonfat dry milk in TBST. Detection: ECL Basic Kit (RM00020). Exposure time: 1s.

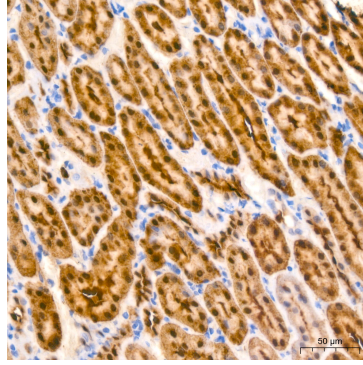


Western blot analysis of lysates from Neuro-2a cells using ALKBH1 Rabbit mAb (A9221) at 1:1000 dilution incubated overnight at 4°C. Secondary antibody: HRP-conjugated Goat anti-Rabbit IgG (H+L) (AS014) at 1:10000 dilution. Lysates/proteins: 25 µg per lane. Blocking buffer: 3% nonfat dry milk in TBST. Detection: ECL Basic Kit (RM00020). Exposure time: 45s.

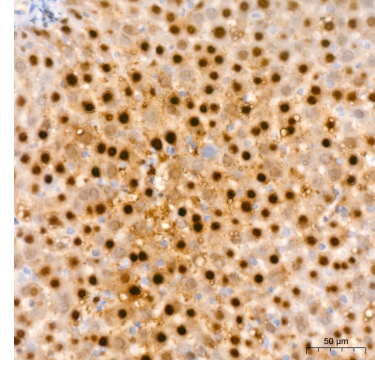
Validation Data



Immunohistochemistry analysis of paraffin-embedded Human liver tissue using ALKBH1 Rabbit mAb (A9221) at a dilution of 1:200 (40x lens). High pressure antigen retrieval performed with 0.01M Citrate buffer (pH 6.0) prior to IHC staining.



Immunohistochemistry analysis of paraffin-embedded Rat kidney tissue using ALKBH1 Rabbit mAb (A9221) at a dilution of 1:200 (40x lens). High pressure antigen retrieval performed with 0.01M Citrate buffer (pH 6.0) prior to IHC staining.



Immunohistochemistry analysis of paraffin-embedded Rat liver tissue using ALKBH1 Rabbit mAb (A9221) at a dilution of 1:200 (40x lens). High pressure antigen retrieval performed with 0.01M Citrate buffer (pH 6.0) prior to IHC staining.