

Profilin1 Rabbit mAb

Catalog No.: A9188

Recombinant

1 Publications

Basic Information

Observed MW

15kDa

Calculated MW

15kDa

Category

Primary antibody

Applications

WB, ELISA

Cross-Reactivity

Human, Mouse, Rat

CloneNo number

ARC1469

Background

This gene encodes a member of the profilin family of small actin-binding proteins. The encoded protein plays an important role in actin dynamics by regulating actin polymerization in response to extracellular signals. Deletion of this gene is associated with Miller-Dieker syndrome, and the encoded protein may also play a role in Huntington disease. Multiple pseudogenes of this gene are located on chromosome 1.

Recommended Dilutions

WB 1:500 - 1:2000

ELISA Recommended starting concentration is 1 µg/mL. Please optimize the concentration based on your specific assay requirements.

Immunogen Information

Gene ID

5216

Swiss Prot

P07737

Immunogen

Synthetic peptide. This information is considered to be commercially sensitive.

Synonyms

ALS18; Profilin1

Contact

☎ | 400-999-6126

✉ | cn.market@abclonal.com.cn

🌐 | www.abclonal.com.cn

Product Information

Source

Rabbit

Isotype

IgG

Purification

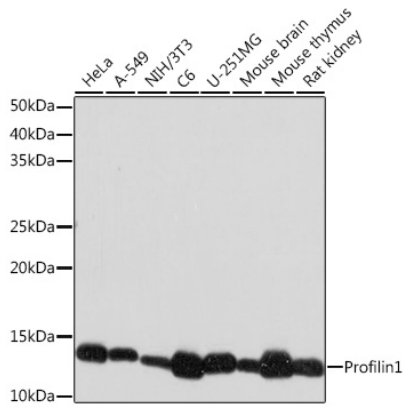
Affinity purification

Storage

Store at -20°C. Avoid freeze / thaw cycles.

Buffer: PBS containing 50% glycerol and 0.05% BSA, preserved with proclin300 or sodium azide (as specified on the Certificate of Analysis), pH 7.3.

Validation Data



Western blot analysis of various lysates using Profilin1 Rabbit mAb (A9188) at 1:1000 dilution. Secondary antibody: HRP-conjugated Goat anti-Rabbit IgG (H+L) (AS014) at 1:10000 dilution. Lysates/proteins: 25µg per lane. Blocking buffer: 3% nonfat dry milk in TBST. Detection: ECL Basic Kit (RM00020). Exposure time: 30s.