

# HMGB2 Rabbit mAb

Catalog No.: A9168

Recombinant

2 Publications

## Basic Information

**Observed MW**

24kDa

**Calculated MW**

24kDa

**Category**

Primary antibody

**Applications**

WB, IHC-P, IF/ICC, IP, ELISA, ChIP, CUT&amp;Tag

**Cross-Reactivity**

Human, Mouse, Rat

**CloneNo number**

ARC1460

## Background

This gene encodes a member of the non-histone chromosomal high mobility group protein family. The proteins of this family are chromatin-associated and ubiquitously distributed in the nucleus of higher eukaryotic cells. In vitro studies have demonstrated that this protein is able to efficiently bend DNA and form DNA circles. These studies suggest a role in facilitating cooperative interactions between cis-acting proteins by promoting DNA flexibility. This protein was also reported to be involved in the final ligation step in DNA end-joining processes of DNA double-strand breaks repair and V(D)J recombination.

## Recommended Dilutions

**WB** 1:1000 - 1:6000**IHC-P** 1:200 - 1:2000**IF/ICC** 1:100 - 1:1000**IP** 0.5µg-4µg antibody for  
200µg-400µg extracts of  
whole cells**ELISA** Recommended starting  
concentration is 1 µg/mL.  
Please optimize the  
concentration based on  
your specific assay  
requirements.**ChIP** 5µg antibody for  
10µg-15µg of Chromatin**CUT&Tag** 10<sup>5</sup> cells /1 µg

## Immunogen Information

**Gene ID**

3148

**Swiss Prot**

P26583

**Immunogen**

Synthetic peptide. This information is considered to be commercially sensitive.

**Synonyms**

HMG2; HMGB2

## Product Information

**Source**

Rabbit

**Isotype**

IgG

**Purification**

Affinity purification

**Storage**

Store at -20°C. Avoid freeze / thaw cycles.

Buffer: PBS with 0.02% sodium azide, 0.05% BSA, 50% glycerol, pH7.3.

Contact

---

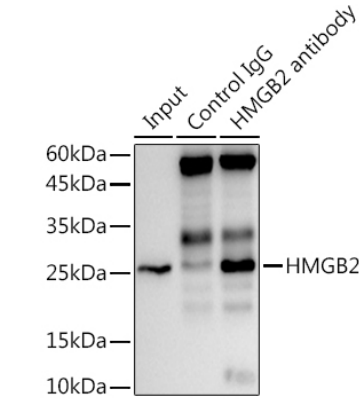
☎ | 400-999-6126

✉ | [cn.market@abclonal.com.cn](mailto:cn.market@abclonal.com.cn)

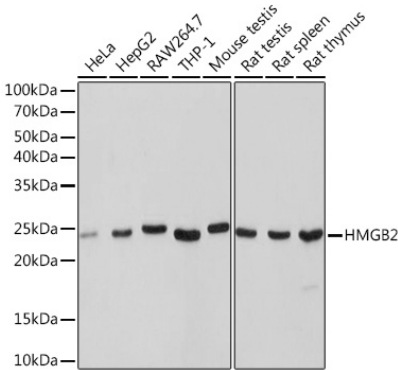
🌐 | [www.abclonal.com.cn](http://www.abclonal.com.cn)

---

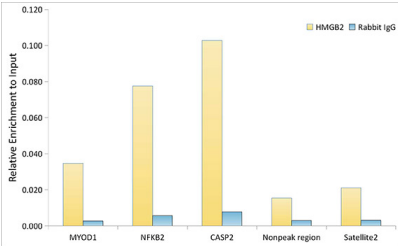
Validation Data



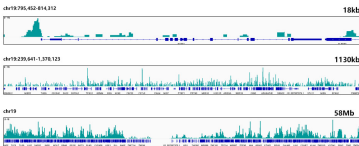
Immunoprecipitation analysis of 300 µg extracts from Mouse testis using 3 µg HMGB2 antibody (A9168). Western blot was performed from the immunoprecipitate using HMGB2 (A9168) at a dilution of 1:1000.



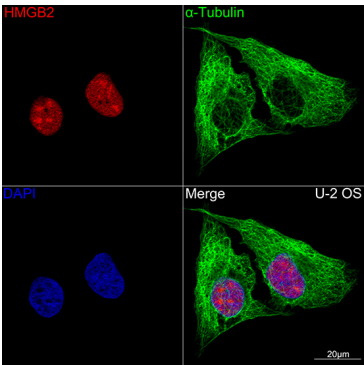
Western blot analysis of various lysates using HMGB2 Rabbit mAb (A9168) at 1:1000 dilution. Secondary antibody: HRP-conjugated Goat anti-Rabbit IgG (H+L) (AS014) at 1:10000 dilution. Lysates/proteins: 25µg per lane. Blocking buffer: 3% nonfat dry milk in TBST. Detection: ECL Basic Kit (RM00020). Exposure time: 1s.



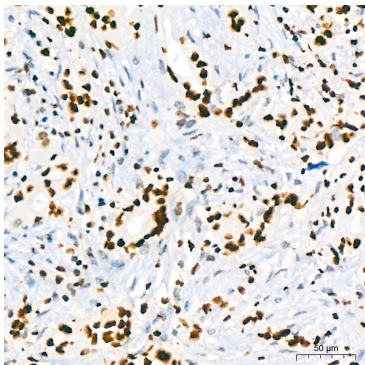
Chromatin immunoprecipitation analysis of extracts from HepG2 cells, using HMGB2 antibody (A9168) and rabbit IgG. The amount of immunoprecipitated DNA was checked by quantitative PCR. Histogram was constructed by the ratios of the immunoprecipitated DNA to the input.



CUT&Tag was performed using the CUT&Tag Assay Kit (pAG-Tn5) for Illumina(RK20265)



Confocal imaging of U-2 OS cells using HMGB2 Rabbit mAb (A9168, dilution)



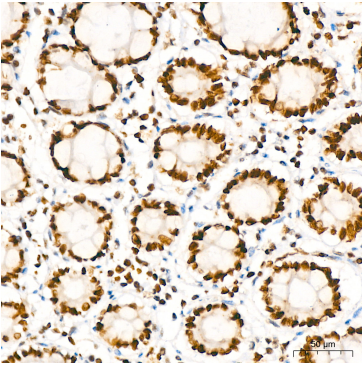
Immunohistochemistry analysis of paraffin-embedded Human breast cancer using

# Validation Data

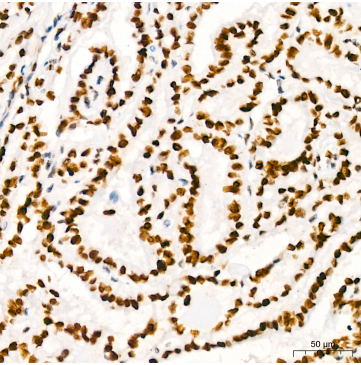
from 10<sup>5</sup> K562 cells with 1µg HMGB2 Rabbit mAb(A9168), along with a Goat Anti-Rabbit IgG(H+L). The CUT&Tag results indicate the enrichment pattern of HMGB2 in representative gene loci (PTBP1), as shown in figure.

1:100)(Red). The cells were counterstained with α-Tubulin Mouse mAb (AC012,dilution 1:400) (Green). DAPI was used for nuclear staining (blue). Objective: 100x.

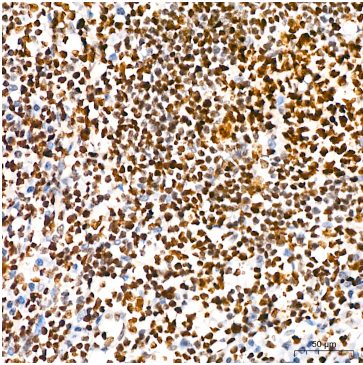
HMGB2 Rabbit mAb (A9168) at dilution of 1:200 (40x lens). High pressure antigen retrieval performed with 0.01M Tris/EDTA Buffer (pH 9.0) prior to IHC staining.



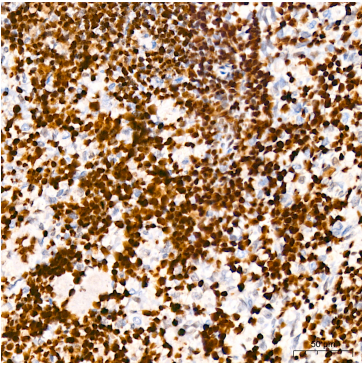
Immunohistochemistry analysis of paraffin-embedded Human colon using HMGB2 Rabbit mAb (A9168) at dilution of 1:200 (40x lens). High pressure antigen retrieval performed with 0.01M Tris/EDTA Buffer (pH 9.0) prior to IHC staining.



Immunohistochemistry analysis of paraffin-embedded Human thyroid cancer using HMGB2 Rabbit mAb (A9168) at dilution of 1:200 (40x lens). High pressure antigen retrieval performed with 0.01M Tris/EDTA Buffer (pH 9.0) prior to IHC staining.



Immunohistochemistry analysis of paraffin-embedded Human tonsil using HMGB2 Rabbit mAb (A9168) at dilution of 1:200 (40x lens). High pressure antigen retrieval performed with 0.01M Tris/EDTA Buffer (pH 9.0) prior to IHC staining.



Immunohistochemistry analysis of paraffin-embedded Rat spleen using HMGB2 Rabbit mAb (A9168) at dilution of 1:200 (40x lens). High pressure antigen retrieval performed with 0.01M Tris/EDTA Buffer (pH 9.0) prior to IHC staining.