

TMPRSS2 Rabbit mAb

Catalog No.: A9126

Recombinant

2 Publications

Basic Information

Observed MW

52kDa

Calculated MW

54kDa

Category

Primary antibody

Applications

ELISA, WB, IHC-P

Cross-Reactivity

Human, Mouse, Rat

CloneNo number

ARC1439

Background

This gene encodes a protein that belongs to the serine protease family. The encoded protein contains a type II transmembrane domain, a receptor class A domain, a scavenger receptor cysteine-rich domain and a protease domain. Serine proteases are known to be involved in many physiological and pathological processes. This gene was demonstrated to be up-regulated by androgenic hormones in prostate cancer cells and down-regulated in androgen-independent prostate cancer tissue. The protease domain of this protein is thought to be cleaved and secreted into cell media after autocleavage. This protein also facilitates entry of viruses into host cells by proteolytically cleaving and activating viral envelope glycoproteins. Viruses found to use this protein for cell entry include Influenza virus and the human coronaviruses HCoV-229E, MERS-CoV, SARS-CoV and SARS-CoV-2 (COVID-19 virus). Alternatively spliced transcript variants encoding different isoforms have been found for this gene.

Recommended Dilutions

WB 1:500 - 1:2000

IHC-P 1:50 - 1:200

Immunogen Information

Gene ID

7113

Swiss Prot

O15393

Immunogen

A synthetic peptide corresponding to a sequence within amino acids 1-100 of human TMPRSS2 (O15393).

Synonyms

PRSS10; TMPRSS2

Contact

 | 400-999-6126 | cn.market@abclonal.com.cn | www.abclonal.com.cn

Product Information

Source

Rabbit

Isotype

IgG

Purification

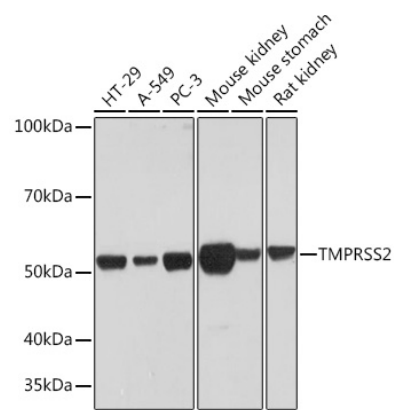
Affinity purification

Storage

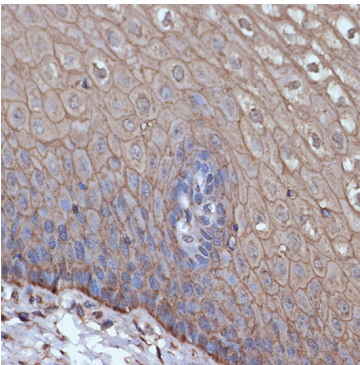
Store at -20°C. Avoid freeze / thaw cycles.

Buffer: PBS with 0.02% sodium azide, 0.05% BSA, 50% glycerol, pH7.3.

Validation Data



Western blot analysis of extracts of various cell lines, using TMPRSS2 Rabbit mAb (A9126) at 1:1000 dilution.
Secondary antibody: HRP Goat Anti-Rabbit IgG (H+L) (AS014) at 1:10000 dilution.
Lysates/proteins: 25µg per lane.
Blocking buffer: 3% nonfat dry milk in TBST.
Detection: ECL Enhanced Kit (RM00021).
Exposure time: 3min.



Immunohistochemistry analysis of paraffin-embedded human esophageal using TMPRSS2 Rabbit mAb (A9126) at dilution of 1:100 (40x lens). Perform microwave antigen retrieval with 10 mM Tris/EDTA buffer pH 9.0 before commencing with IHC staining protocol.