

KAT13A / SRC1 Rabbit mAb

Catalog No.: A9058 **Recombinant**

Basic Information

Observed MW

180kDa

Calculated MW

157kDa

Category

Primary antibody

Applications

WB,IP,ELISA

Cross-Reactivity

Human

CloneNo number

ARC1395

Background

The protein encoded by this gene acts as a transcriptional coactivator for steroid and nuclear hormone receptors. It is a member of the p160/steroid receptor coactivator (SRC) family and like other family members has histone acetyltransferase activity and contains a nuclear localization signal, as well as bHLH and PAS domains. The product of this gene binds nuclear receptors directly and stimulates the transcriptional activities in a hormone-dependent fashion. Alternatively spliced transcript variants encoding different isoforms have been identified.

Recommended Dilutions

WB 1:500 - 1:1000**IP** 0.5µg-4µg antibody for
200µg-400µg extracts of
whole cells**ELISA** Recommended starting
concentration is 1 µg/mL.
Please optimize the
concentration based on
your specific assay
requirements.

Immunogen Information

Gene ID

8648

Swiss Prot

Q15788

Immunogen

Recombinant protein (or fragment). This information is considered to be commercially sensitive.

Synonyms

SRC1; KAT13A; RIP160; F-SRC-1; bHLHe42; bHLHe74; KAT13A / SRC1

Contact

 | 400-999-6126 | cn.market@abclonal.com.cn | www.abclonal.com.cn

Product Information

Source

Rabbit

Isotype

IgG

Purification

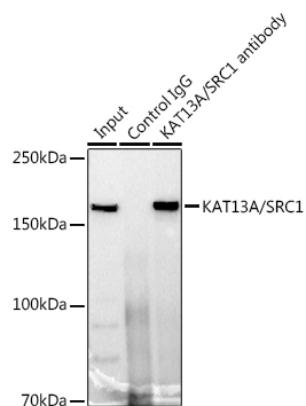
Affinity purification

Storage

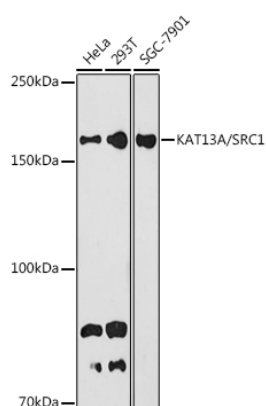
Store at -20°C. Avoid freeze / thaw cycles.

Buffer: PBS with 0.02% sodium azide, 0.05% BSA, 50% glycerol, pH7.3.

Validation Data



Immunoprecipitation analysis of 300 µg extracts of 293T cells using 3 µg KAT13A/SRC1 antibody (A9058). Western blot was performed from the immunoprecipitate using KAT13A/SRC1 antibody (A9058) at a dilution of 1:1000.



Western blot analysis of various lysates using KAT13A / SRC1 Rabbit mAb (A9058) at 1:1000 dilution. Secondary antibody: HRP-conjugated Goat anti-Rabbit IgG (H+L) (AS014) at 1:10000 dilution. Lysates/proteins: 25µg per lane. Blocking buffer: 3% nonfat dry milk in TBST. Detection: ECL Basic Kit (RM00020). Exposure time: 180s.