

# MSH6 Rabbit mAb

Catalog No.: A8795 **Recombinant**

## Basic Information

**Observed MW**

160kDa/153kDa

**Calculated MW**

153kDa

**Category**

Primary antibody

**Applications**

WB, IF/ICC, ELISA

**Cross-Reactivity**

Human, Mouse, Rat

**CloneNo number**

ARC1305

## Background

This gene encodes a member of the DNA mismatch repair MutS family. In *E. coli*, the MutS protein helps in the recognition of mismatched nucleotides prior to their repair. A highly conserved region of approximately 150 aa, called the Walker-A adenine nucleotide binding motif, exists in MutS homologs. The encoded protein heterodimerizes with MSH2 to form a mismatch recognition complex that functions as a bidirectional molecular switch that exchanges ADP and ATP as DNA mismatches are bound and dissociated. Mutations in this gene may be associated with hereditary nonpolyposis colon cancer, colorectal cancer, and endometrial cancer. Transcripts variants encoding different isoforms have been described.

## Recommended Dilutions

**WB** 1:500 - 1:1000**IF/ICC** 1:50 - 1:200

**ELISA** Recommended starting concentration is 1 µg/mL. Please optimize the concentration based on your specific assay requirements.

## Immunogen Information

**Gene ID**

2956

**Swiss Prot**

P52701

**Immunogen**

Synthetic peptide. This information is considered to be commercially sensitive.

**Synonyms**

GTBP; HSAP; p160; GTMBP; MSH-6; HNPCC5; LYNCH5; MMRC53; MSH6

## Contact

 | 400-999-6126 | [cn.market@abclonal.com.cn](mailto:cn.market@abclonal.com.cn) | [www.abclonal.com.cn](http://www.abclonal.com.cn)

## Product Information

**Source**

Rabbit

**Isotype**

IgG

**Purification**

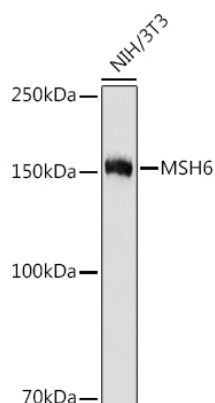
Affinity purification

**Storage**

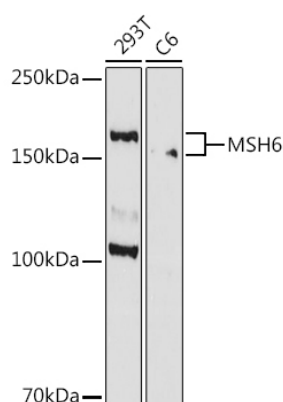
Store at -20°C. Avoid freeze / thaw cycles.

Buffer: PBS with 0.02% sodium azide, 0.05% BSA, 50% glycerol, pH7.3.

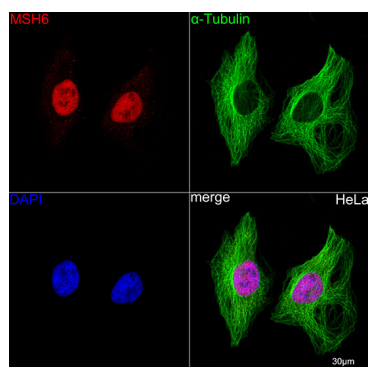
## Validation Data



Western blot analysis of lysates from NIH/3T3 cells, using MSH6 Rabbit mAb (A8795) at 1:1000 dilution.  
Secondary antibody: HRP-conjugated Goat anti-Rabbit IgG (H+L) (AS014) at 1:10000 dilution.  
Lysates/proteins: 25µg per lane.  
Blocking buffer: 3% nonfat dry milk in TBST.  
Detection: ECL Basic Kit (RM00020).  
Exposure time: 60s.



Western blot analysis of various lysates using MSH6 Rabbit mAb (A8795) at 1:1000 dilution.  
Secondary antibody: HRP-conjugated Goat anti-Rabbit IgG (H+L) (AS014) at 1:10000 dilution.  
Lysates/proteins: 25µg per lane.  
Blocking buffer: 3% nonfat dry milk in TBST.  
Detection: ECL Basic Kit (RM00020).  
Exposure time: 180s.



Confocal imaging of HeLa cells using MSH6 Rabbit mAb (A8795, dilution 1:100) (Red). The cells were counterstained with α-Tubulin Mouse mAb (AC012, dilution 1:400) (Green). DAPI was used for nuclear staining (blue). Objective: 60x.