

# ARID2 Rabbit pAb

Catalog No.: A8601 **3 Publications**

## Basic Information

**Observed MW**

250kDa

**Calculated MW**

197kDa

**Category**

Primary antibody

**Applications**

WB,IP,ELISA

**Cross-Reactivity**

Human

## Background

This gene encodes a member of the AT-rich interactive domain (ARID)-containing family of DNA-binding proteins. Members of the ARID family have roles in embryonic patterning, cell lineage gene regulation, cell cycle control, transcriptional regulation and chromatin structure modification. This protein functions as a subunit of the polybromo- and BRG1-associated factor or PBAF (SWI/SNF-B) chromatin remodeling complex which facilitates ligand-dependent transcriptional activation by nuclear receptors. Mutations in this gene are associated with hepatocellular carcinomas. A pseudogene of this gene is found on chromosome1.

## Recommended Dilutions

**WB** 1:500 - 1:2000**IP** 0.5µg-4µg antibody for  
200µg-400µg extracts of  
whole cells**ELISA** Recommended starting  
concentration is 1 µg/mL.  
Please optimize the  
concentration based on  
your specific assay  
requirements.

## Immunogen Information

**Gene ID**

196528

**Swiss Prot**

Q68CP9

**Immunogen**

Recombinant protein (or fragment). This information is considered to be commercially sensitive.

**Synonyms**

CSS6; p200; BAF200; SMARCF3; ARID2

## Contact

 | 400-999-6126 | [cn.market@abclonal.com.cn](mailto:cn.market@abclonal.com.cn) | [www.abclonal.com.cn](http://www.abclonal.com.cn)

## Product Information

**Source**

Rabbit

**Isotype**

IgG

**Purification**

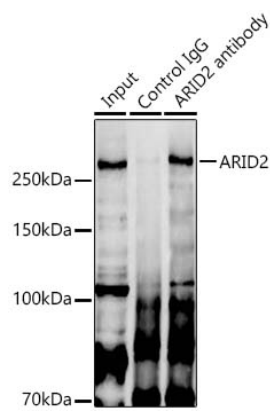
Affinity purification

**Storage**

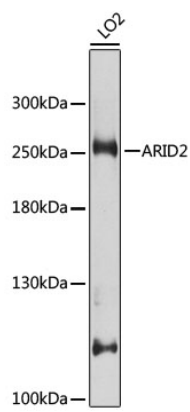
Store at -20°C. Avoid freeze / thaw cycles.

Buffer: PBS with 0.02% sodium azide, 50% glycerol, pH7.3.

# Validation Data



Immunoprecipitation analysis of 300 µg extracts of 293F cells using 3 µg ARID2 Rabbit pAb (A8601). Western blot was performed from the immunoprecipitate using ARID2 Rabbit pAb (A8601) at a dilution of 1:1000.



Western blot analysis of lysates from LO2 cells, using ARID2 Rabbit pAb (A8601) at 1:1000 dilution. Secondary antibody: HRP-conjugated Goat anti-Rabbit IgG (H+L) (AS014) at 1:10000 dilution. Lysates/proteins: 25µg per lane. Blocking buffer: 3% nonfat dry milk in TBST. Detection: ECL Basic Kit (RM00020). Exposure time: 30s.