

# CALCRL Rabbit pAb

Catalog No.: A8533

3 Publications

## Basic Information

### Observed MW

43kDa

### Calculated MW

53kDa

### Category

Primary antibody

### Applications

WB, ELISA

### Cross-Reactivity

Human, Mouse, Rat

## Background

Enables adrenomedullin binding activity; adrenomedullin receptor activity; and calcitonin gene-related peptide receptor activity. Involved in several processes, including G protein-coupled receptor signaling pathway; cellular response to sucrose stimulus; and receptor internalization. Located in endoplasmic reticulum; endosome; and lysosome. Part of CGRP receptor complex and adrenomedullin receptor complex. Colocalizes with plasma membrane. Implicated in hereditary lymphedema.

## Recommended Dilutions

**WB** 1:500 - 1:2000

**ELISA** Recommended starting concentration is 1 µg/mL. Please optimize the concentration based on your specific assay requirements.

## Immunogen Information

### Gene ID

10203

### Swiss Prot

Q16602

### Immunogen

Synthetic peptide. This information is considered to be commercially sensitive.

### Synonyms

CRLR; CGRPR; LMPHM8; CALCRL

## Contact

☎ | 400-999-6126

✉ | [cn.market@abclonal.com.cn](mailto:cn.market@abclonal.com.cn)

🌐 | [www.abclonal.com.cn](http://www.abclonal.com.cn)

## Product Information

### Source

Rabbit

### Isotype

IgG

### Purification

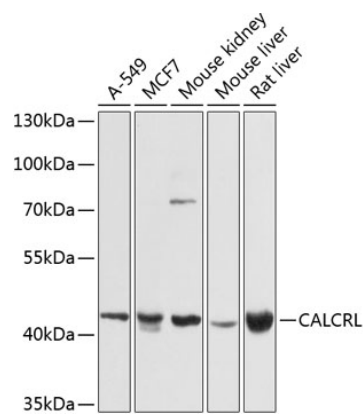
Affinity purification

### Storage

Store at -20°C. Avoid freeze / thaw cycles.

Buffer: PBS with 0.02% sodium azide, 50% glycerol, pH 7.3.

## Validation Data



Western blot analysis of various lysates using CALCRL Rabbit pAb (A8533) at 1:1000 dilution.  
Secondary antibody: HRP-conjugated Goat anti-Rabbit IgG (H+L) (AS014) at 1:10000 dilution.  
Lysates/proteins: 25µg per lane.  
Blocking buffer: 3% nonfat dry milk in TBST.  
Detection: ECL Basic Kit (RM00020).  
Exposure time: 15s.