

# METTL14 Rabbit pAb

Catalog No.: A8530 **46 Publications**

## Basic Information

### Observed MW

65kDa

### Calculated MW

52kDa

### Category

Primary antibody

### Applications

WB,IF-P,IHC-P,ELISA

### Cross-Reactivity

Human, Mouse, Rat

## Background

Enables mRNA binding activity. Contributes to mRNA (2'-O-methyladenosine-N6-)-methyltransferase activity. Involved in mRNA metabolic process; negative regulation of hematopoietic progenitor cell differentiation; and positive regulation of translation. Located in nucleoplasm. Part of RNA N6-methyladenosine methyltransferase complex.

## Recommended Dilutions

**WB** 1:500 - 1:1000

**IF-P** 1:100 - 1:200

**IHC-P** 1:50 - 1:200

**ELISA** Recommended starting concentration is 1 µg/mL. Please optimize the concentration based on your specific assay requirements.

## Immunogen Information

### Gene ID

57721

### Swiss Prot

Q9HCE5

### Immunogen

Recombinant protein (or fragment). This information is considered to be commercially sensitive.

### Synonyms

hMETTL14; METTL14

## Contact

☎ | 400-999-6126

✉ | [cn.market@abclonal.com.cn](mailto:cn.market@abclonal.com.cn)

🌐 | [www.abclonal.com.cn](http://www.abclonal.com.cn)

## Product Information

### Source

Rabbit

### Isotype

IgG

### Purification

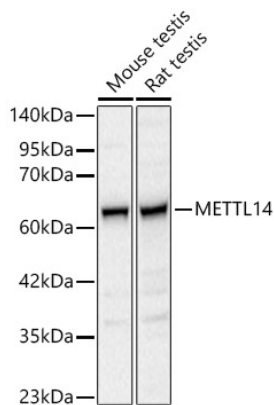
Affinity purification

### Storage

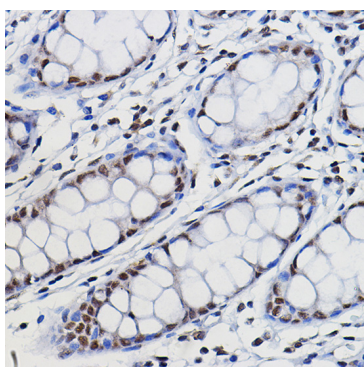
Store at -20°C. Avoid freeze / thaw cycles.

Buffer: PBS containing 50% glycerol, preserved with proclin300 or sodium azide (as specified on the Certificate of Analysis), pH 7.3.

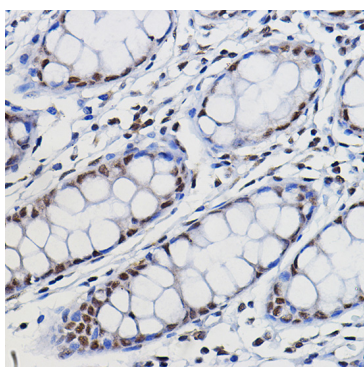
## Validation Data



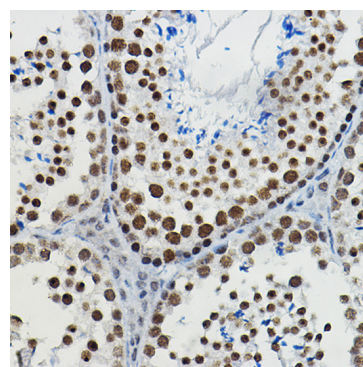
Western blot analysis of various lysates, using METTL14 Rabbit pAb (A8530) at 1:500 dilution. Secondary antibody: HRP-conjugated Goat anti-Rabbit IgG (H+L) (AS014) at 1:10000 dilution. Lysates/proteins: 25µg per lane. Blocking buffer: 3% nonfat dry milk in TBST. Detection: ECL Basic Kit (RM00020). Exposure time: 5s.



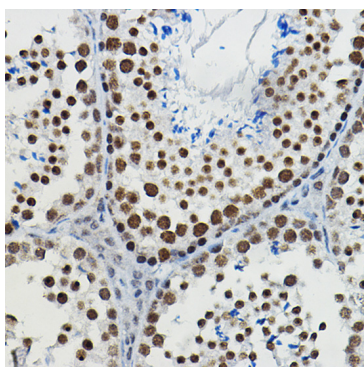
Immunohistochemistry analysis of paraffin-embedded Human colon using METTL14 Rabbit pAb (A8530) at dilution of 1:100 (40x lens). High pressure antigen retrieval performed with 0.01M Citrate buffer (pH 6.0) prior to IHC staining.



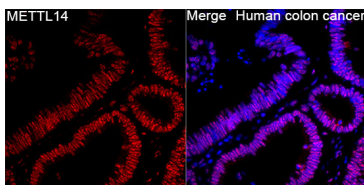
Immunohistochemistry analysis of paraffin-embedded Human colon using METTL14 Rabbit pAb (A8530) at dilution of 1:100 (40x lens). High pressure antigen retrieval performed with 0.01M Citrate buffer (pH 6.0) prior to IHC staining.



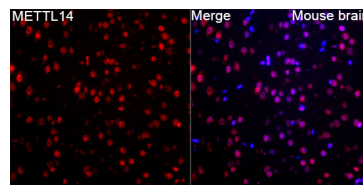
Immunohistochemistry analysis of paraffin-embedded Mouse testis using METTL14 Rabbit pAb (A8530) at dilution of 1:100 (40x lens). High pressure antigen retrieval performed with 0.01M Citrate buffer (pH 6.0) prior to IHC staining.



Immunohistochemistry analysis of paraffin-embedded Mouse testis using METTL14 Rabbit pAb (A8530) at dilution of 1:100 (40x lens). High pressure antigen retrieval performed with 0.01M Citrate buffer (pH 6.0) prior to IHC staining.



Immunofluorescence analysis of Human colon cancer tissue using METTL14 Rabbit pAb (A8530) at a dilution of 1:100 (40x lens). Secondary antibody: Cy3-conjugated Goat anti-Rabbit IgG (H+L)(AS007) at 1:500 dilution. Blue: DAPI for nuclear staining. High pressure antigen retrieval performed with 0.01M Citrate Buffer (pH 6.0) prior to IF staining.



Immunofluorescence analysis of Mouse brain tissue using METTL14 Rabbit pAb (A8530) at a dilution of 1:100 (40x lens). Secondary antibody: Cy3-conjugated Goat anti-Rabbit IgG (H+L)(AS007) at 1:500 dilution. Blue: DAPI for nuclear staining. Microwave antigen retrieval performed with 0.01M Citrate Buffer (pH 6.0) prior to IF staining.