

ULK1 Rabbit pAb

Catalog No.: A8529

31 Publications

Basic Information

Observed MW

150kDa/140kDa

Calculated MW

113kDa

Category

Primary antibody

Applications

WB, IF/ICC, ELISA

Cross-Reactivity

Human, Mouse, Rat

Background

Enables identical protein binding activity; protein serine/threonine kinase activity; and small GTPase binding activity. Involved in several processes, including autophagosome assembly; positive regulation by symbiont of host autophagy; and protein phosphorylation. Located in autophagosome; cytosol; and phagophore assembly site membrane. Is extrinsic component of autophagosome membrane; extrinsic component of omegasome membrane; and extrinsic component of phagophore assembly site membrane. Part of Atg1/ULK1 kinase complex.

Recommended Dilutions

WB 1:500 - 1:2000

IF/ICC 1:50 - 1:200

ELISA Recommended starting concentration is 1 µg/mL. Please optimize the concentration based on your specific assay requirements.

Immunogen Information

Gene ID

8408

Swiss Prot

O75385

Immunogen

Synthetic peptide. This information is considered to be commercially sensitive.

Synonyms

ATG1; ATG1A; UNC51; hATG1; Unc51.1; ULK1

Contact

☎ | 400-999-6126

✉ | cn.market@abclonal.com.cn

🌐 | www.abclonal.com.cn

Product Information

Source

Rabbit

Isotype

IgG

Purification

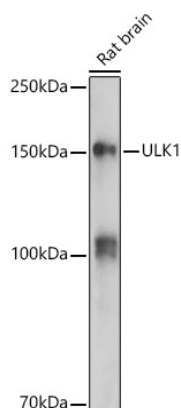
Affinity purification

Storage

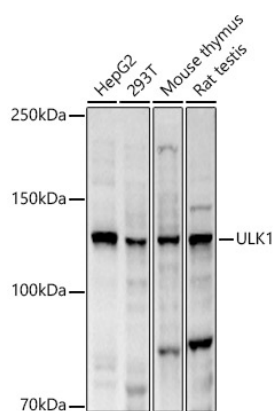
Store at -20°C. Avoid freeze / thaw cycles.

Buffer: PBS containing 50% glycerol, preserved with proclin300 or sodium azide (as specified on the Certificate of Analysis), pH 7.3.

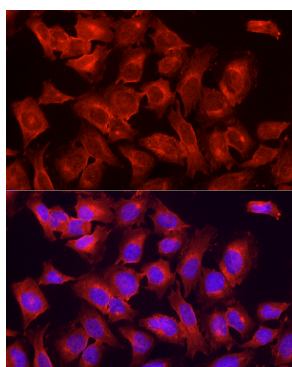
Validation Data



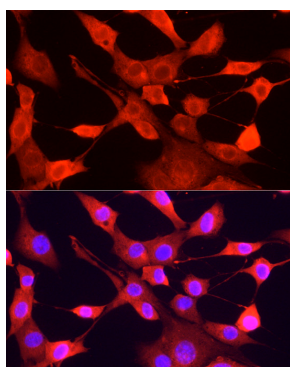
Western blot analysis of lysates from Rat brain, using ULK1 Rabbit pAb (A8529) at 1:500 dilution.
 Secondary antibody: HRP-conjugated Goat anti-Rabbit IgG (H+L) (AS014) at 1:10000 dilution.
 Lysates/proteins: 25µg per lane.
 Blocking buffer: 3% nonfat dry milk in TBST.
 Detection: ECL Enhanced Kit (RM00021).
 Exposure time: 180s.



Western blot analysis of various lysates, using ULK1 Rabbit pAb (A8529) at 1:2000 dilution.
 Secondary antibody: HRP-conjugated Goat anti-Rabbit IgG (H+L) (AS014) at 1:10000 dilution.
 Lysates/proteins: 25µg per lane.
 Blocking buffer: 3% nonfat dry milk in TBST.
 Detection: ECL Basic Kit (RM00020).
 Exposure time: 10s.



Immunofluorescence analysis of HeLa cells using ULK1 Rabbit pAb (A8529) at dilution of 1:200 (40x lens). Secondary antibody: Cy3-conjugated Goat anti-Rabbit IgG (H+L) (AS007) at 1:500 dilution. Blue: DAPI for nuclear staining.



Immunofluorescence analysis of NIH/3T3 cells using ULK1 Rabbit pAb (A8529) at dilution of 1:200 (40x lens). Secondary antibody: Cy3-conjugated Goat anti-Rabbit IgG (H+L) (AS007) at 1:500 dilution. Blue: DAPI for nuclear staining.