

# ZNF408 Rabbit pAb

Catalog No.: A8512

1 Publications

## Basic Information

### Observed MW

78kDa

### Calculated MW

78kDa

### Category

Primary antibody

### Applications

WB, ELISA

### Cross-Reactivity

Human, Mouse, Rat

## Background

The protein encoded by this gene contains ten tandem zinc fingers and an N-terminal SET domain, so it is likely a DNA binding protein that interacts with other proteins. In adults, the encoded protein is expressed most highly in retina. Consequently, defects in this gene have been associated with familial exudative vitreoretinopathy (FEVR) and retinitis pigmentosa (RP).

## Recommended Dilutions

**WB** 1:500 - 1:2000

**ELISA** Recommended starting concentration is 1 µg/mL. Please optimize the concentration based on your specific assay requirements.

## Immunogen Information

### Gene ID

79797

### Swiss Prot

Q9H9D4

### Immunogen

Recombinant protein (or fragment). This information is considered to be commercially sensitive.

### Synonyms

EVR6; RP72; ZNF408

## Contact

☎ | 400-999-6126

✉ | [cn.market@abclonal.com.cn](mailto:cn.market@abclonal.com.cn)

🌐 | [www.abclonal.com.cn](http://www.abclonal.com.cn)

## Product Information

### Source

Rabbit

### Isotype

IgG

### Purification

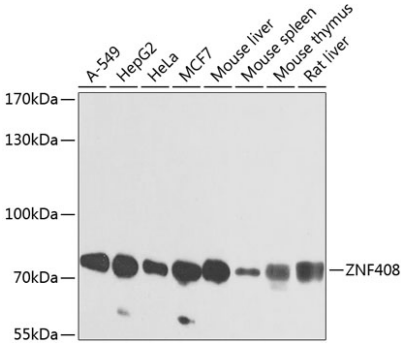
Affinity purification

### Storage

Store at -20°C. Avoid freeze / thaw cycles.

Buffer: PBS with 0.02% sodium azide, 50% glycerol, pH7.3.

# Validation Data



Western blot analysis of various lysates using ZNF408 Rabbit pAb (A8512) at 1:1000 dilution.  
Secondary antibody: HRP-conjugated Goat anti-Rabbit IgG (H+L) (AS014) at 1:10000 dilution.  
Lysates/proteins: 25µg per lane.  
Blocking buffer: 3% nonfat dry milk in TBST.  
Detection: ECL Enhanced Kit (RM00021).  
Exposure time: 1s.