

N4BP1 Rabbit pAb

Catalog No.: A8474 **1 Publications**

Basic Information

Observed MW

120kDa

Calculated MW

100kDa

Category

Primary antibody

Applications

WB,IF/ICC,ELISA

Cross-Reactivity

Human, Mouse

Background

Predicted to enable mRNA binding activity; ribonuclease activity; and ubiquitin binding activity. Involved in cellular response to UV; negative regulation of macromolecule metabolic process; and regulation of innate immune response. Located in PML body; cytosol; and nucleolus. Orthologous to human N4BP1 (NEDD4 binding protein 1).

Recommended Dilutions

WB 1:500 - 1:2000

IF/ICC 1:50 - 1:200

ELISA Recommended starting concentration is 1 µg/mL. Please optimize the concentration based on your specific assay requirements.

Immunogen Information

Gene ID

80750

Swiss Prot

O75113

Immunogen

Recombinant protein (or fragment). This information is considered to be commercially sensitive.

Synonyms

N4BP1

Contact

 | 400-999-6126

 | cn.market@abclonal.com.cn

 | www.abclonal.com.cn

Product Information

Source

Rabbit

Isotype

IgG

Purification

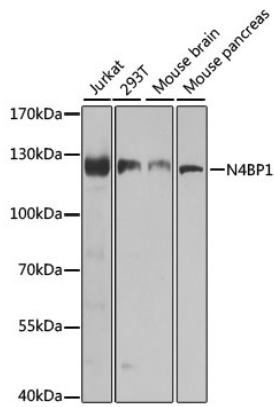
Affinity purification

Storage

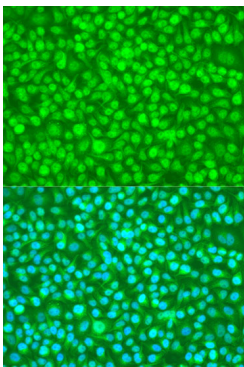
Store at -20°C. Avoid freeze / thaw cycles.

Buffer: PBS, pH 7.3, containing 50% glycerol. Preserved with Proclin300 or sodium azide. May contain 0.05% BSA as specified on the Certificate of Analysis.

Validation Data



Western blot analysis of various lysates using N4BP1 Rabbit pAb (A8474) at 1:1000 dilution. Secondary antibody: HRP-conjugated Goat anti-Rabbit IgG (H+L) (AS014) at 1:10000 dilution. Lysates/proteins: 25µg per lane. Blocking buffer: 3% nonfat dry milk in TBST. Detection: ECL Basic Kit (RM00020). Exposure time: 30s.



Immunofluorescence analysis of U2OS cells using N4BP1 Rabbit pAb (A8474) at dilution of 1:100. Secondary antibody: Cy3-conjugated Goat anti-Rabbit IgG (H+L) (AS007) at 1:500 dilution. Blue: DAPI for nuclear staining.