

DSPP Rabbit pAb

Catalog No.: A8413 **7 Publications**

Basic Information

Observed MW

110kDa

Calculated MW

131kDa

Category

Primary antibody

Applications

WB,ELISA

Cross-Reactivity

Human, Mouse, Rat

Background

This gene encodes a member of the small integrin-binding ligand N-linked glycoprotein (SIBLING) family of proteins. The encoded preproprotein is secreted by odontoblasts and proteolytically processed to generate two principal proteins of the dentin extracellular matrix of the tooth, dentin sialoprotein and dentin phosphoprotein. These two protein products may play distinct but related roles in dentin mineralization. Mutations in this gene are associated with dentinogenesis imperfecta and dentin dysplasia. This gene is present in a gene cluster on chromosome 4. Allelic differences due to repeat polymorphisms have been found for this gene.

Recommended Dilutions

WB 1:500 - 1:5000

ELISA Recommended starting concentration is 1 µg/mL. Please optimize the concentration based on your specific assay requirements.

Immunogen Information

Gene ID

1834

Swiss Prot

Q9NZW4

Immunogen

Recombinant protein (or fragment). This information is considered to be commercially sensitive.

Synonyms

DPP; DSP; DGI1; DMP3; DFNA39; DSPP

Contact

☎ | 400-999-6126

✉ | cn.market@abclonal.com.cn

🌐 | www.abclonal.com.cn

Product Information

Source

Rabbit

Isotype

IgG

Purification

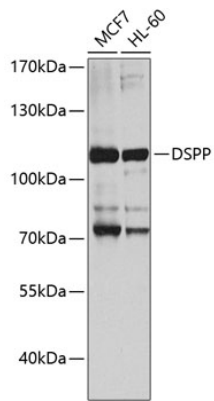
Affinity purification

Storage

Store at -20°C. Avoid freeze / thaw cycles.

Buffer: PBS containing 50% glycerol, preserved with proclin300 or sodium azide (as specified on the Certificate of Analysis), pH 7.3.

Validation Data



Western blot analysis of various lysates using DSPP Rabbit pAb (A8413) at 1:1000 dilution.
Secondary antibody: HRP-conjugated Goat anti-Rabbit IgG (H+L) (AS014) at 1:10000 dilution.
Lysates/proteins: 25 μ g per lane.
Blocking buffer: 3% nonfat dry milk in TBST.
Detection: ECL Basic Kit (RM00020).
Exposure time: 30s.