

# Mannose Receptor/CD206 Rabbit pAb

Catalog No.: A8301 **26 Publications**

## Basic Information

### Observed MW

190-250kDa

### Calculated MW

166kDa

### Category

Primary antibody

### Applications

ELISA, WB

### Cross-Reactivity

Mouse, Rat

## Background

The recognition of complex carbohydrate structures on glycoproteins is an important part of several biological processes, including cell-cell recognition, serum glycoprotein turnover, and neutralization of pathogens. The protein encoded by this gene is a type I membrane receptor that mediates the endocytosis of glycoproteins by macrophages. The protein has been shown to bind high-mannose structures on the surface of potentially pathogenic viruses, bacteria, and fungi so that they can be neutralized by phagocytic engulfment.

## Recommended Dilutions

WB 1:1000 - 1:5000

## Immunogen Information

### Gene ID

4360

### Swiss Prot

P22897

### Immunogen

Recombinant fusion protein containing a sequence corresponding to amino acids 610-860 of human Mannose Receptor/CD206 (NP\_002429.1).

### Synonyms

MMR; hMR; CD206; MRC1L1; CLEC13D; CLEC13DL; bA541I19.1; Mannose Receptor/CD206

## Contact

☎ | 400-999-6126

✉ | [cn.market@abclonal.com.cn](mailto:cn.market@abclonal.com.cn)

🌐 | [www.abclonal.com.cn](http://www.abclonal.com.cn)

## Product Information

### Source

Rabbit

### Isotype

IgG

### Purification

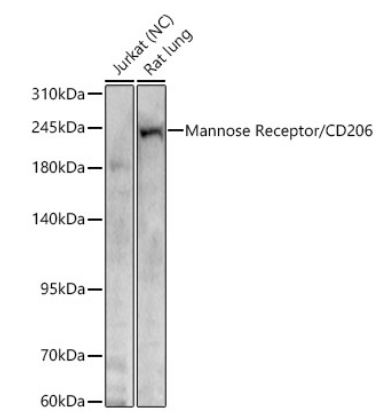
Affinity purification

### Storage

Store at -20°C. Avoid freeze / thaw cycles.

Buffer: PBS with 0.05% proclin300, 50% glycerol, pH7.3.

Validation Data



Western blot analysis of various lysates using Mannose Receptor/CD206 Rabbit pAb (A8301) at 1:2000 dilution.  
Secondary antibody:HRP Goat Anti-Rabbit IgG (H+L)(AS014) at 1:10000 dilution.  
Lysates/proteins: 25 µg per lane.  
Blocking buffer: 3% nonfat dry milk in TBST.  
Detection:ECL Basic Kit (RM00020).  
Negative control (NC): Jurkat.  
Exposure time: 30s.