

CEP57L1 Rabbit pAb

Catalog No.: A8290

Basic Information

Observed MW

60kDa

Calculated MW

54kDa

Category

Primary antibody

Applications

WB, ELISA

Cross-Reactivity

Human

Background

Enables identical protein binding activity. Predicted to be located in cytoplasm and microtubule. Predicted to be active in centrosome.

Recommended Dilutions

WB 1:500 - 1:2000

ELISA Recommended starting concentration is 1 µg/mL. Please optimize the concentration based on your specific assay requirements.

Immunogen Information

Gene ID

285753

Swiss Prot

Q8IYX8

Immunogen

Recombinant protein (or fragment). This information is considered to be commercially sensitive.

Synonyms

cep57R; C6orf182; bA487F23.2; CEP57L1

Contact

 | 400-999-6126

 | cn.market@abclonal.com.cn

 | www.abclonal.com.cn

Product Information

Source

Rabbit

Isotype

IgG

Purification

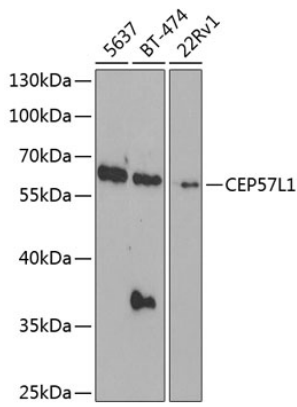
Affinity purification

Storage

Store at -20°C. Avoid freeze / thaw cycles.

Buffer: PBS containing 50% glycerol, preserved with proclin300 or sodium azide (as specified on the Certificate of Analysis), pH 7.3.

Validation Data



Western blot analysis of various lysates using CEP57L1 Rabbit pAb (A8290) at 1:1000 dilution. Secondary antibody: HRP-conjugated Goat anti-Rabbit IgG (H+L) (AS014) at 1:10000 dilution. Lysates/proteins: 25µg per lane. Blocking buffer: 3% nonfat dry milk in TBST. Detection: ECL Basic Kit (RM00020). Exposure time: 90s.