

STX12 Rabbit pAb

Catalog No.: A8200

Basic Information

Observed MW

31kDa

Calculated MW

32kDa

Category

Primary antibody

Applications

WB, ELISA

Cross-Reactivity

Human, Mouse, Rat

Background

Predicted to enable SNAP receptor activity and SNARE binding activity. Involved in autophagosome assembly; cholesterol efflux; and protein stabilization. Located in several cellular components, including membrane raft; phagocytic vesicle; and phagophore assembly site. Part of SNARE complex. Colocalizes with BLOC-1 complex.

Recommended Dilutions

WB 1:500 - 1:2000

ELISA Recommended starting concentration is 1 µg/mL. Please optimize the concentration based on your specific assay requirements.

Immunogen Information

Gene ID

23673

Swiss Prot

Q86Y82

Immunogen

Recombinant protein (or fragment). This information is considered to be commercially sensitive.

Synonyms

STX13; STX14; STX12

Contact

☎ | 400-999-6126

✉ | cn.market@abclonal.com.cn

🌐 | www.abclonal.com.cn

Product Information

Source

Rabbit

Isotype

IgG

Purification

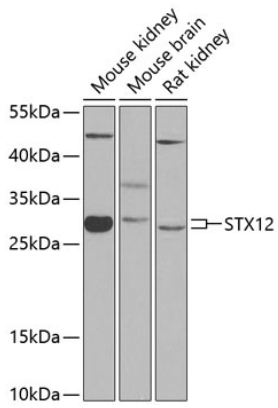
Affinity purification

Storage

Store at -20°C. Avoid freeze / thaw cycles.

Buffer: PBS with 0.09% Sodium azide, 50% glycerol, pH7.3.

Validation Data



Western blot analysis of various lysates using STX12 Rabbit pAb (A8200) at 1:1000 dilution.
Secondary antibody: HRP-conjugated Goat anti-Rabbit IgG (H+L) (AS014) at 1:10000 dilution.
Lysates/proteins: 25 μ g per lane.
Blocking buffer: 3% nonfat dry milk in TBST.
Detection: ECL Basic Kit (RM00020).
Exposure time: 90s.