

FZD4 Rabbit pAb

Catalog No.: A8161 **7 Publications**

Basic Information

Observed MW

70kDa

Calculated MW

60kDa

Category

Primary antibody

Applications

ELISA, WB, IHC-P

Cross-Reactivity

Human, Mouse, Rat

Background

This gene is a member of the frizzled gene family. Members of this family encode seven-transmembrane domain proteins that are receptors for the Wingless type MMTV integration site family of signaling proteins. Most frizzled receptors are coupled to the beta-catenin canonical signaling pathway. This protein may play a role as a positive regulator of the Wingless type MMTV integration site signaling pathway. A transcript variant retaining intronic sequence and encoding a shorter isoform has been described, however, its expression is not supported by other experimental evidence.

Recommended Dilutions

WB 1:500 - 1:2000

IHC-P 1:50 - 1:200

Immunogen Information

Gene ID

8322

Swiss Prot

Q9ULV1

Immunogen

Recombinant fusion protein containing a sequence corresponding to amino acids 42-179 of human FZD4 (NP_036325.2).

Synonyms

Fz4; EVR1; FEVR; Fz-4; FzE4; GPCR; hFz4; CD344; FZD4S; FZD4

Contact

☎ | 400-999-6126

✉ | cn.market@abclonal.com.cn

🌐 | www.abclonal.com.cn

Product Information

Source

Rabbit

Isotype

IgG

Purification

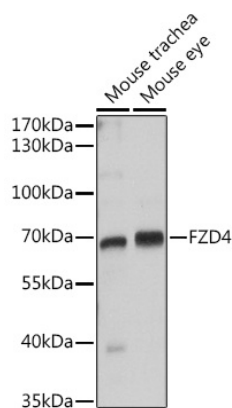
Affinity purification

Storage

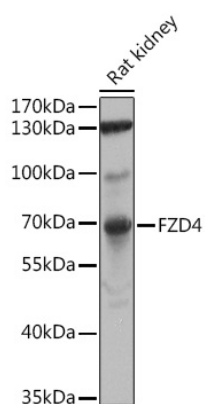
Store at -20°C. Avoid freeze / thaw cycles.

Buffer: PBS with 0.02% sodium azide, 50% glycerol, pH7.3.

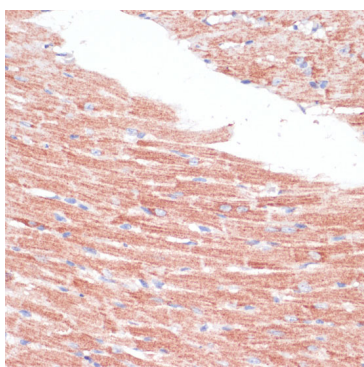
Validation Data



Western blot analysis of extracts of various cell lines, using FZD4 antibody (A8161) at 1:1000 dilution.
Secondary antibody: HRP Goat Anti-Rabbit IgG (H+L) (AS014) at 1:10000 dilution.
Lysates/proteins: 25µg per lane.
Blocking buffer: 3% nonfat dry milk in TBST.
Detection: ECL Basic Kit (RM00020).
Exposure time: 90s.



Western blot analysis of extracts of Rat kidney, using FZD4 antibody (A8161) at 1:1000 dilution.
Secondary antibody: HRP Goat Anti-Rabbit IgG (H+L) (AS014) at 1:10000 dilution.
Lysates/proteins: 25µg per lane.
Blocking buffer: 3% nonfat dry milk in TBST.
Detection: ECL Enhanced Kit (RM00021).
Exposure time: 30s.



Immunohistochemistry analysis of paraffin-embedded mouse heart using FZD4 antibody (A8161) at dilution of 1:100 (40x lens). Perform microwave antigen retrieval with 10 mM PBS buffer pH 7.2 before commencing with IHC staining protocol.