

[KD Validated] KDM6A Rabbit pAb

Catalog No.: A8159SP **5 Publications**

Basic Information

Observed MW

180 kDa

Calculated MW

154 kDa

Category

Primary antibody

Applications

WB,IF/ICC,IF-P,IHC-P,ELISA

Cross-Reactivity

Human, Mouse, Rat

Background

Enables DNA binding activity; histone H3-tri/di-methyl-lysine-27 demethylase activity; and identical protein binding activity. Involved in chromatin remodeling. Acts upstream of or within several processes, including chordate embryonic development; embryonic morphogenesis; and histone H3-K27 demethylation. Located in nucleus. Part of histone methyltransferase complex. Is expressed in several structures, including early conceptus; gonad; liver; lung; and spleen. Used to study chronic myelomonocytic leukemia. Human ortholog(s) of this gene implicated in several diseases, including Kabuki syndrome; bladder urothelial carcinoma; gastrointestinal system cancer (multiple); lung carcinoma (multiple); and triple-receptor negative breast cancer. Orthologous to human KDM6A (lysine demethylase 6A).

Recommended Dilutions

WB 1:5000 - 1:20000

IF/ICC 1:200 - 1:400

IF-P 1:200 - 1:400

IHC-P 1:200 - 1:800

ELISA Recommended starting concentration is 1 µg/mL. Please optimize the concentration based on your specific assay requirements. For high-ratio antibody dilutions (≥1:10000) a sequential dilution method is strongly recommended to ensure measurement accuracy.

Immunogen Information

Gene ID

22289

Swiss Prot

O15550

Immunogen

This information is considered to be commercially sensitive.

Synonyms

Utx

Product Information

Source

Rabbit

Isotype

IgG

Purification

Affinity purification

Storage

Store at -20°C. Avoid freeze / thaw cycles.

Buffer: PBS, pH 7.3, containing 50% glycerol. Preserved with Proclin300 or sodium azide.

May contain 0.05% BSA as specified on the Certificate of Analysis.

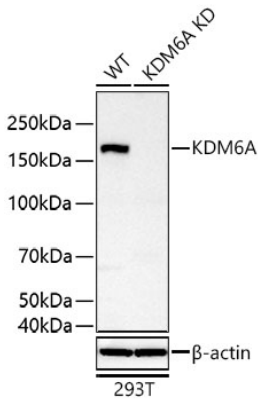
Contact

 | 400-999-6126

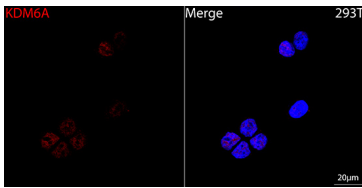
 | cn.market@abclonal.com.cn

 | www.abclonal.com.cn

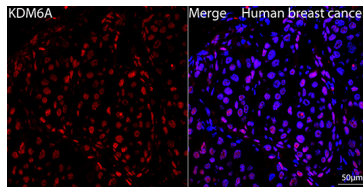
Validation Data



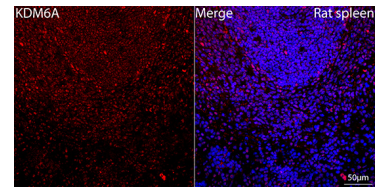
Western blot analysis of lysates from wild type (WT) and KDM6A knockdown (KD) 293T cells using [KD Validated] KDM6A Rabbit pAb (A8159SP) at 1:12000 dilution incubated overnight at 4°C. Secondary antibody: HRP-conjugated Goat anti-Rabbit IgG (H+L) (AS014) at 1:10000 dilution. Lysates/proteins: 25 µg per lane. Blocking buffer: 3% nonfat dry milk in TBST. Detection: ECL Basic Kit (RM00020). Exposure time: 10 s.



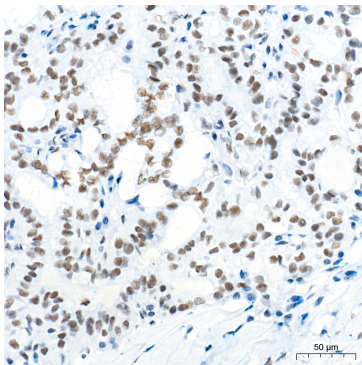
Confocal imaging of 293T cells using [KD Validated] KDM6A Rabbit pAb (A8159SP, dilution 1:200) followed by a further incubation with Cy3-conjugated Goat anti-Rabbit IgG (H+L) (AS007, dilution 1:500) (Red). DAPI was used for nuclear staining (Blue). Objective: 100x.



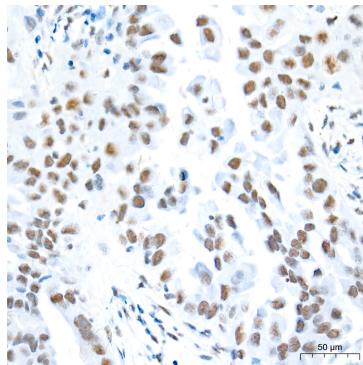
Confocal imaging of paraffin-embedded Human breast cancer tissue using [KD Validated] KDM6A Rabbit pAb (A8159SP, dilution 1:200) followed by a further incubation with Cy3-conjugated Goat anti-Rabbit IgG (H+L) (AS007, dilution 1:500) (Red). DAPI was used for nuclear staining (Blue). High pressure antigen retrieval performed with 0.01M Citrate Buffer (pH 6.0) prior to IF staining. Objective: 40x.



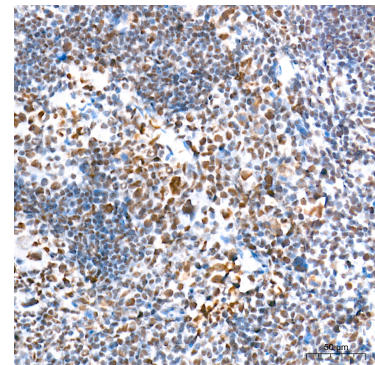
Confocal imaging of paraffin-embedded Rat spleen tissue using [KD Validated] KDM6A Rabbit pAb (A8159SP, dilution 1:200) followed by a further incubation with Cy3-conjugated Goat anti-Rabbit IgG (H+L) (AS007, dilution 1:500) (Red). DAPI was used for nuclear staining (Blue). High pressure antigen retrieval performed with 0.01M Citrate Buffer (pH 6.0) prior to IF staining. Objective: 40x.



Immunohistochemistry analysis of paraffin-embedded Human thyroid cancer tissue using [KD Validated] KDM6A Rabbit pAb (A8159SP) at a dilution of 1:600 (40x lens). High pressure antigen retrieval performed with 0.01M Tris-EDTA Buffer (pH 9.0) prior to IHC staining.

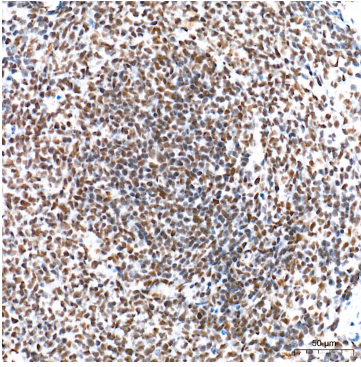


Immunohistochemistry analysis of paraffin-embedded Human lung squamous carcinoma tissue using [KD Validated] KDM6A Rabbit pAb (A8159SP) at a dilution of 1:600 (40x lens). High pressure antigen retrieval performed with 0.01M Tris-EDTA Buffer (pH 9.0) prior to IHC staining.

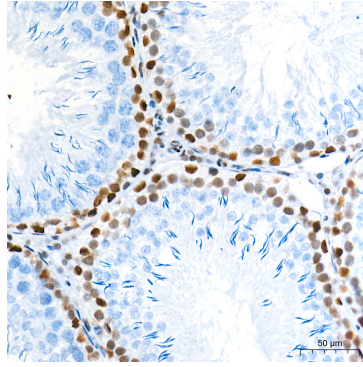


Immunohistochemistry analysis of paraffin-embedded Mouse spleen tissue using [KD Validated] KDM6A Rabbit pAb (A8159SP) at a dilution of 1:600 (40x lens). High pressure antigen retrieval performed with 0.01M Tris-EDTA Buffer (pH 9.0) prior to IHC staining.

Validation Data



Immunohistochemistry analysis of paraffin-embedded Rat spleen tissue using [KD Validated] KDM6A Rabbit pAb (A8159SP) at a dilution of 1:600 (40x lens). High pressure antigen retrieval performed with 0.01M Tris-EDTA Buffer (pH 9.0) prior to IHC staining.



Immunohistochemistry analysis of paraffin-embedded Rat testis tissue using [KD Validated] KDM6A Rabbit pAb (A8159SP) at a dilution of 1:600 (40x lens). High pressure antigen retrieval performed with 0.01M Tris-EDTA Buffer (pH 9.0) prior to IHC staining.