

ENTPD5 Rabbit pAb

Catalog No.: A8108

Basic Information

Observed MW

Calculated MW

48kDa

Category

Primary antibody

Applications

IF/ICC,ELISA

Cross-Reactivity

Human

Background

The protein encoded by this gene is similar to E-type nucleotidases (NTPases)/ecto-ATPase/apyrases. NTPases, such as CD39, mediate catabolism of extracellular nucleotides. ENTPD5 contains 4 apyrase-conserved regions which is characteristic of NTPases.

Recommended Dilutions

IF/ICC 1:50 - 1:200

ELISA Recommended starting concentration is 1 µg/mL. Please optimize the concentration based on your specific assay requirements.

Immunogen Information

Gene ID

957

Swiss Prot

O75356

Immunogen

Recombinant protein (or fragment). This information is considered to be commercially sensitive.

Synonyms

PCPH; CD39L4; NTPDase-5; ENTPD5

Contact

 | 400-999-6126

 | cn.market@abclonal.com.cn

 | www.abclonal.com.cn

Product Information

Source

Rabbit

Isotype

IgG

Purification

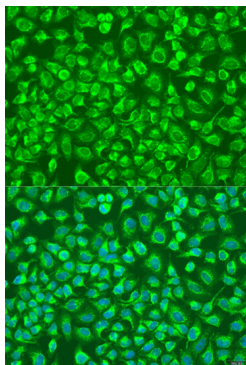
Affinity purification

Storage

Store at -20°C. Avoid freeze / thaw cycles.

Buffer: PBS with 0.02% sodium azide, 50% glycerol, pH 7.3.

Validation Data



Immunofluorescence analysis of U2OS cells using ENTPD5 Rabbit pAb (A8108) at dilution of 1:100. Secondary antibody: Cy3-conjugated Goat anti-Rabbit IgG (H+L) (AS007) at 1:500 dilution. Blue: DAPI for nuclear staining.