

# ERp29 Rabbit pAb

Catalog No.: A7959

## Basic Information

### Observed MW

29kDa

### Calculated MW

29kDa

### Category

Primary antibody

### Applications

WB, IHC-P, IF/ICC, ELISA

### Cross-Reactivity

Human, Mouse, Rat

## Background

This gene encodes a protein which localizes to the lumen of the endoplasmic reticulum (ER). It is a member of the protein disulfide isomerase (PDI) protein family but lacks an active thioredoxin motif, suggesting that this protein does not function as a disulfide isomerase. The canonical protein dimerizes and is thought to play a role in the processing of secretory proteins within the ER. Alternative splicing results in multiple transcript variants encoding different isoforms.

## Recommended Dilutions

<b>WB</b>	1:500 - 1:2000
<b>IHC-P</b>	1:50 - 1:200
<b>IF/ICC</b>	1:50 - 1:200
<b>ELISA</b>	Recommended starting concentration is 1 µg/mL. Please optimize the concentration based on your specific assay requirements.

## Contact

☎	400-999-6126
✉	cn.market@abclonal.com.cn
🌐	www.abclonal.com.cn

## Immunogen Information

### Gene ID

10961

### Swiss Prot

P30040

### Immunogen

Recombinant protein (or fragment). This information is considered to be commercially sensitive.

### Synonyms

ERp28; ERp31; PDIA9; PDI-DB; C12orf8; HEL-S-107; ERp29

## Product Information

### Source

Rabbit

### Isotype

IgG

### Purification

Affinity purification

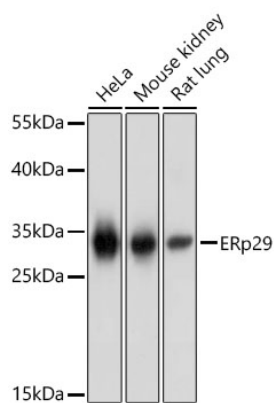
### Storage

Store at -20°C. Avoid freeze / thaw cycles.

Buffer: PBS containing 50% glycerol, preserved with proclin300 or sodium azide (as specified on the Certificate of Analysis), pH 7.3.

## Validation Data

---



Western blot analysis of various lysates using ERp29 Rabbit pAb (A7959) at 1:1000 dilution.  
Secondary antibody: HRP-conjugated Goat anti-Rabbit IgG (H+L) (AS014) at 1:10000 dilution.  
Lysates / proteins: 25 µg per lane.  
Blocking buffer: 3 % nonfat dry milk in TBST.  
Detection: ECL Basic Kit (RM00020).  
Exposure time: 1s.