

# PFKP Rabbit pAb

**Catalog No.: A7916SP**

## Basic Information

### Observed MW

86 kDa

### Calculated MW

86 kDa

### Category

Primary antibody

### Applications

WB,IHC-P,ELISA

### Cross-Reactivity

Human, Mouse, Rat

## Background

This gene encodes a member of the phosphofructokinase A protein family. The encoded enzyme is the platelet-specific isoform of phosphofructokinase and plays a key role in glycolysis regulation. This gene may play a role in metabolic reprogramming in some cancers, including clear cell renal cell carcinomas, and cancer of the bladder, breast, and lung. Alternative splicing results in multiple transcript variants.

## Recommended Dilutions

**WB** 1:2000 - 1:5000

**IHC-P** 1:200 - 1:800

**ELISA** Recommended starting concentration is 1 µg/mL. Please optimize the concentration based on your specific assay requirements. For high-ratio antibody dilutions ( $\geq 1:10000$ ) a sequential dilution method is strongly recommended to ensure measurement accuracy.

## Immunogen Information

### Gene ID

5214

### Swiss Prot

Q01813

### Immunogen

This information is considered to be commercially sensitive.

### Synonyms

PFKF; PFK-C; PFK-P; ATP-PFK; PFKP

## Product Information

### Source

Rabbit

### Isotype

IgG

### Purification

Affinity purification

### Storage

Store at -20°C. Avoid freeze / thaw cycles.

Buffer: PBS, pH 7.3, containing 50% glycerol. Preserved with Proclin300 or sodium azide.

May contain 0.05% BSA as specified on the Certificate of Analysis.

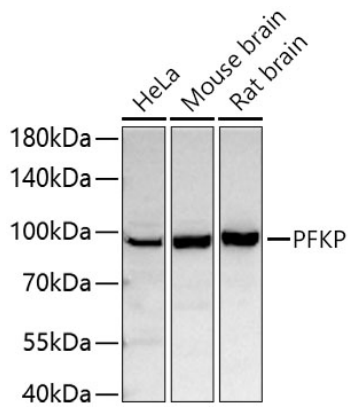
## Contact

☎ | 400-999-6126

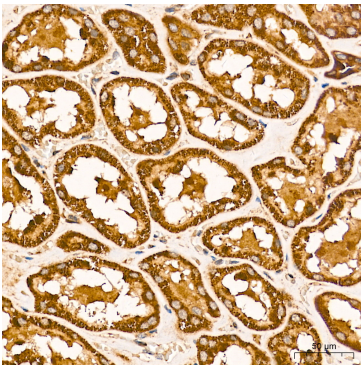
✉ | [cn.market@abclonal.com.cn](mailto:cn.market@abclonal.com.cn)

🌐 | [www.abclonal.com.cn](http://www.abclonal.com.cn)

## Validation Data



Western blot analysis of various lysates using PFKP Rabbit pAb (A7916SP) at 1:3000 dilution incubated overnight at 4°C.  
Secondary antibody: HRP-conjugated Goat anti-Rabbit IgG (H+L) (AS014) at 1:10000 dilution.  
Lysates/proteins: 25 µg per lane.  
Blocking buffer: 3% nonfat dry milk in TBST.  
Detection: ECL Basic Kit (RM00020).  
Exposure time: 30 s.



Immunohistochemistry analysis of paraffin-embedded Human kidney tissue using PFKP Rabbit pAb (A7916SP) at a dilution of 1:200 (40x lens). High pressure antigen retrieval performed with 0.01M Tris-EDTA Buffer (pH 9.0) prior to IHC staining.