

[KO Validated] SAMHD1 Rabbit pAb

Catalog No.: A7794 **KO** **Validated** **1 Publications**

Basic Information

Observed MW

72kDa

Calculated MW

72kDa

Category

Primary antibody

Applications

WB, IHC-P, IP, ELISA

Cross-Reactivity

Human, Mouse, Rat

Background

This gene may play a role in regulation of the innate immune response. The encoded protein is upregulated in response to viral infection and may be involved in mediation of tumor necrosis factor-alpha proinflammatory responses. Mutations in this gene have been associated with Aicardi-Goutieres syndrome.

Recommended Dilutions

WB 1:500 - 1:2000

IHC-P 1:50 - 1:200

IP 0.5µg-4µg antibody for
200µg-400µg extracts of
whole cells

ELISA Recommended starting
concentration is 1 µg/mL.
Please optimize the
concentration based on
your specific assay
requirements.

Immunogen Information

Gene ID

25939

Swiss Prot

Q9Y3Z3

Immunogen

Recombinant protein (or fragment). This information is considered to be commercially sensitive.

Synonyms

DCIP; CHBL2; HDDC1; MOP-5; SBBI88; hSAMHD1; D1

Contact

☎ | 400-999-6126

✉ | cn.market@abclonal.com.cn

🌐 | www.abclonal.com.cn

Product Information

Source

Rabbit

Isotype

IgG

Purification

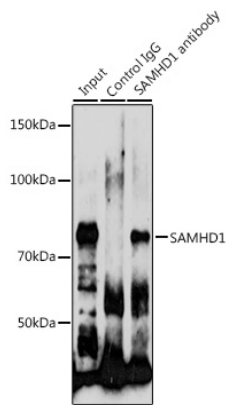
Affinity purification

Storage

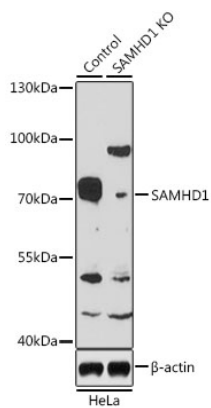
Store at -20°C. Avoid freeze / thaw cycles.

Buffer: PBS with 0.02% sodium azide, 50% glycerol, pH7.3.

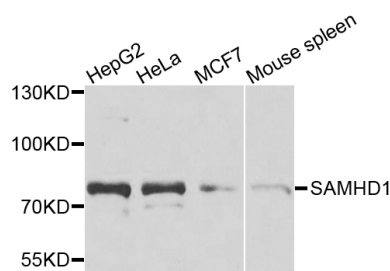
Validation Data



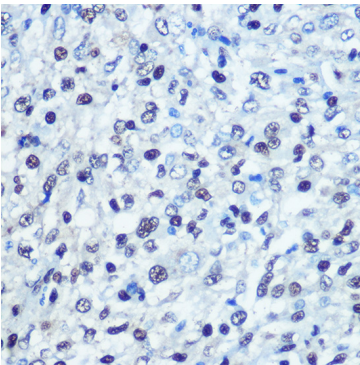
Immunoprecipitation analysis of 200 µg extracts of HeLa cells using 3 µg SAMHD1 antibody (A7794). Western blot was performed from the immunoprecipitate using SAMHD1 antibody (A7794) at a dilution of 1:1000.



Western blot analysis of lysates from wild type (WT) and SAMHD1 knockout (KO) HeLa cells, using [KO Validated] SAMHD1 Rabbit pAb (A7794) at 1:1000 dilution. Secondary antibody: HRP-conjugated Goat anti-Rabbit IgG (H+L) (AS014) at 1:10000 dilution. Lysates/proteins: 25µg per lane. Blocking buffer: 3% nonfat dry milk in TBST. Detection: ECL Basic Kit (RM00020). Exposure time: 3min.



Western blot analysis of various lysates using [KO Validated] SAMHD1 Rabbit pAb (A7794) at 1:1000 dilution. Secondary antibody: HRP-conjugated Goat anti-Rabbit IgG (H+L) (AS014) at 1:10000 dilution. Lysates/proteins: 25µg per lane. Blocking buffer: 3% nonfat dry milk in TBST. Detection: ECL Basic Kit (RM00020). Exposure time: 90s.



Validation Data

Immunohistochemistry analysis of paraffin-embedded Human liver cancer using [KO Validated] SAMHD1 Rabbit pAb (A7794) at dilution of 1:100 (40x lens). Microwave antigen retrieval performed with 0.01M PBS Buffer (pH 7.2) prior to IHC staining.