

# PLA2G4C Rabbit pAb

Catalog No.: A7753

## Basic Information

### Observed MW

Refer to figures

### Calculated MW

61kDa

### Category

Primary antibody

### Applications

IF/ICC,ELISA

### Cross-Reactivity

Human

## Background

This gene encodes a protein which is a member of the phospholipase A2 enzyme family which hydrolyzes glycerophospholipids to produce free fatty acids and lysophospholipids, both of which serve as precursors in the production of signaling molecules. The encoded protein has been shown to be a calcium-independent and membrane bound enzyme. Multiple transcript variants encoding different isoforms have been found for this gene.

## Recommended Dilutions

**IF/ICC** 1:50 - 1:200

**ELISA** Recommended starting concentration is 1 µg/mL. Please optimize the concentration based on your specific assay requirements.

## Immunogen Information

### Gene ID

8605

### Swiss Prot

Q9UP65

### Immunogen

Recombinant protein (or fragment). This information is considered to be commercially sensitive.

### Synonyms

CPLA2-gamma; PLA2G4C

## Contact

☎ | 400-999-6126

✉ | [cn.market@abclonal.com.cn](mailto:cn.market@abclonal.com.cn)

🌐 | [www.abclonal.com.cn](http://www.abclonal.com.cn)

## Product Information

### Source

Rabbit

### Isotype

IgG

### Purification

Affinity purification

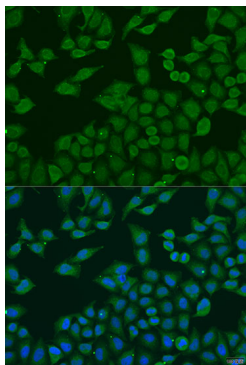
### Storage

Store at -20°C. Avoid freeze / thaw cycles.

Buffer: PBS containing 50% glycerol, preserved with proclin300 or sodium azide (as specified on the Certificate of Analysis), pH 7.3.

## Validation Data

---



Immunofluorescence analysis of U2OS cells using PLA2G4C Rabbit pAb (A7753) at dilution of 1:100. Secondary antibody: Cy3-conjugated Goat anti-Rabbit IgG (H+L) (AS007) at 1:500 dilution. Blue: DAPI for nuclear staining.