

# Rac1/2/3 Rabbit pAb

Catalog No.: A7720

6 Publications

## Basic Information

### Observed MW

21kDa

### Calculated MW

21kDa

### Category

Primary antibody

### Applications

ELISA, WB, IHC-P, IF/ICC

### Cross-Reactivity

Human, Mouse, Rat

## Background

The protein encoded by this gene is a GTPase which belongs to the RAS superfamily of small GTP-binding proteins. Members of this superfamily appear to regulate a diverse array of cellular events, including the control of cell growth, cytoskeletal reorganization, and the activation of protein kinases. Two transcript variants encoding different isoforms have been found for this gene.

## Recommended Dilutions

|        |                |
|--------|----------------|
| WB     | 1:500 - 1:1000 |
| IHC-P  | 1:50 - 1:200   |
| IF/ICC | 1:50 - 1:200   |

## Immunogen Information

### Gene ID

5879

### Swiss Prot

P63000

### Immunogen

Recombinant fusion protein containing a sequence corresponding to amino acids 1-192 of human Rac1/2/3 (NP\_008839.2).

### Synonyms

MIG5; MRD48; Rac-1; TC-25; p21-Rac1; Rac1/2/3

## Contact

|   |                           |
|---|---------------------------|
| ☎ | 400-999-6126              |
| ✉ | cn.market@abclonal.com.cn |
| 🌐 | www.abclonal.com.cn       |

## Product Information

### Source

Rabbit

### Isotype

IgG

### Purification

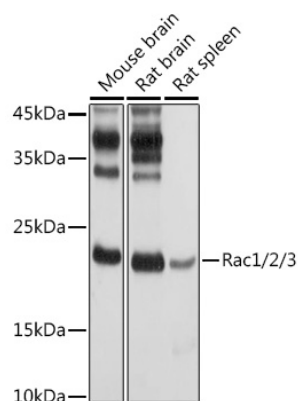
Affinity purification

### Storage

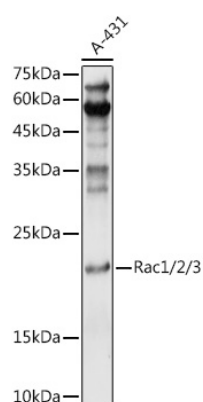
Store at -20°C. Avoid freeze / thaw cycles.

Buffer: PBS with 0.01% thimerosal, 50% glycerol, pH7.3.

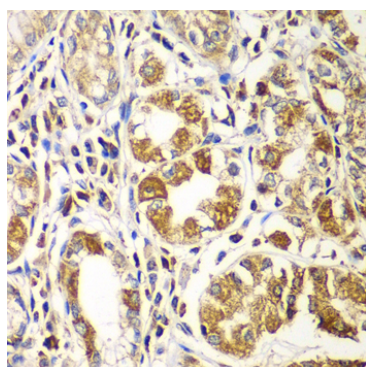
## Validation Data



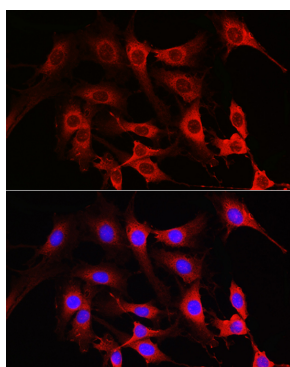
Western blot analysis of extracts of various cell lines, using Rac1/2/3 antibody (A7720) at 1:1000 dilution.  
 Secondary antibody: HRP Goat Anti-Rabbit IgG (H+L) (AS014) at 1:10000 dilution.  
 Lysates/proteins: 25µg per lane.  
 Blocking buffer: 3% nonfat dry milk in TBST.  
 Detection: ECL Basic Kit (RM00020).  
 Exposure time: 30s.



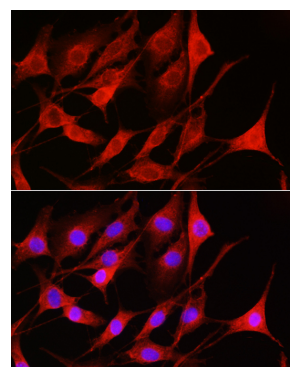
Western blot analysis of extracts of A-431 cells, using Rac1/2/3 antibody (A7720) at 1:1000 dilution.  
 Secondary antibody: HRP Goat Anti-Rabbit IgG (H+L) (AS014) at 1:10000 dilution.  
 Lysates/proteins: 25µg per lane.  
 Blocking buffer: 3% nonfat dry milk in TBST.  
 Detection: ECL Basic Kit (RM00020).  
 Exposure time: 90s.



Immunohistochemistry analysis of paraffin-embedded human gastric using Rac1/2/3 antibody (A7720) at dilution of 1:100 (40x lens). Perform microwave antigen retrieval with 10 mM PBS buffer pH 7.2 before commencing with IHC staining protocol.



Immunofluorescence analysis of C6 cells using Rac1/2/3 Rabbit pAb (A7720) at dilution of 1:100 (40x lens). Blue: DAPI for nuclear staining.



Immunofluorescence analysis of NIH-3T3 cells using Rac1/2/3 Rabbit pAb (A7720) at dilution of 1:100 (40x lens). Blue: DAPI for nuclear staining.