

MTCO2 Rabbit pAb

Catalog No.: A7702 **3 Publications**

Basic Information

Observed MW

20kDa/26kDa

Calculated MW

26kDa

Category

Primary antibody

Applications

WB, ELISA

Cross-Reactivity

Human, Mouse, Rat

Background

Contributes to cytochrome-c oxidase activity. Predicted to be involved in mitochondrial electron transport, cytochrome c to oxygen and positive regulation of vasoconstriction. Located in mitochondrial inner membrane. Part of respiratory chain complex IV. Biomarker of Huntington's disease and stomach cancer.

Recommended Dilutions

WB 1:500 - 1:2000

ELISA Recommended starting concentration is 1 µg/mL. Please optimize the concentration based on your specific assay requirements.

Immunogen Information

Gene ID

4513

Swiss Prot

P00403

Immunogen

Synthetic peptide. This information is considered to be commercially sensitive.

Synonyms

COII; MTCO2; COX2

Contact

☎ | 400-999-6126

✉ | cn.market@abclonal.com.cn

🌐 | www.abclonal.com.cn

Product Information

Source

Rabbit

Isotype

IgG

Purification

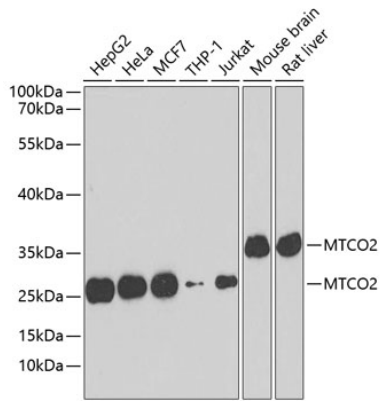
Affinity purification

Storage

Store at -20°C. Avoid freeze / thaw cycles.

Buffer: PBS with 0.02% sodium azide, 50% glycerol, pH 7.3.

Validation Data



Western blot analysis of various lysates using MTCO2 Rabbit pAb (A7702) at 1:500 dilution.
Secondary antibody: HRP-conjugated Goat anti-Rabbit IgG (H+L) (AS014) at 1:10000 dilution.
Lysates/proteins: 25µg per lane.
Blocking buffer: 3% nonfat dry milk in TBST.
Detection: ECL Enhanced Kit (RM00021).
Exposure time: 90s.