

Thioredoxin 1 (Trx1/TXN) Rabbit pAb

Catalog No.: A7638

6 Publications

Basic Information

Observed MW

12kDa

Calculated MW

12kDa

Category

Primary antibody

Applications

WB, IHC-P, IF/ICC, IP, ELISA

Cross-Reactivity

Human, Mouse

Background

The protein encoded by this gene acts as a homodimer and is involved in many redox reactions. The encoded protein is active in the reversible S-nitrosylation of cysteines in certain proteins, which is part of the response to intracellular nitric oxide. This protein is found in the cytoplasm. Two transcript variants encoding different isoforms have been found for this gene.

Recommended Dilutions

WB 1:500 - 1:2000**IHC-P** 1:100 - 1:500**IF/ICC** 1:50 - 1:200**IP** 0.5µg-4µg antibody for
200µg-400µg extracts of
whole cells**ELISA** Recommended starting
concentration is 1 µg/mL.
Please optimize the
concentration based on
your specific assay
requirements.

Immunogen Information

Gene ID

7295

Swiss Prot

P10599

Immunogen

Synthetic peptide. This information is considered to be commercially sensitive.

Synonyms

TRX; TRDX; TRX1; Trx80; Thioredoxin 1 (Trx1/TXN)

Product Information

Source

Rabbit

Isotype

IgG

Purification

Affinity purification

Storage

Store at -20°C. Avoid freeze / thaw cycles.

Buffer: PBS containing 50% glycerol, preserved with proclin300 or sodium azide (as specified on the Certificate of Analysis), pH 7.3.

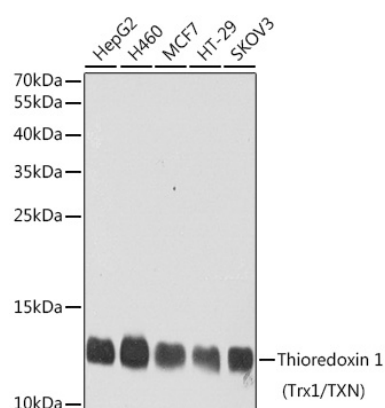
Contact

 | 400-999-6126 | cn.market@abclonal.com.cn | www.abclonal.com.cn

Validation Data



Immunoprecipitation analysis of 150 µg extracts of MCF7 cells using 3 µg Thioredoxin 1 (Trx1/Thioredoxin 1 (Trx1/TXN)) antibody (A7638). Western blot was performed from the immunoprecipitate using Thioredoxin 1 (Trx1/Thioredoxin 1 (Trx1/TXN)) antibody (A7638) at a dilution of 1:500.



Western blot analysis of various lysates using Thioredoxin 1 (Trx1/TXN) Rabbit pAb (A7638) at 1:1000 dilution.

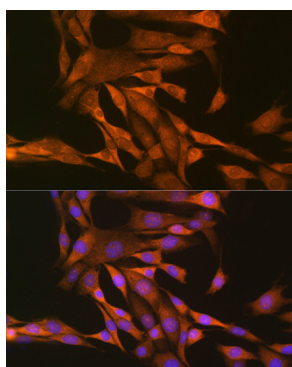
Secondary antibody: HRP-conjugated Goat anti-Rabbit IgG (H+L) (AS014) at 1:10000 dilution.

Lysates/proteins: 25µg per lane.

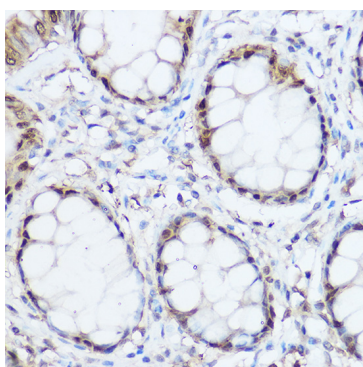
Blocking buffer: 3% nonfat dry milk in TBST.

Detection: ECL Basic Kit (RM00020).

Exposure time: 90s.



Immunofluorescence analysis of NIH-3T3 cells using Thioredoxin 1 (Trx1/Thioredoxin 1 (Trx1/TXN)) Rabbit pAb (A7638) at dilution of 1:100 (40x lens). Secondary antibody: Cy3-conjugated Goat anti-Rabbit IgG (H+L) (AS007) at 1:500 dilution. Blue: DAPI for nuclear staining.



Immunohistochemistry analysis of paraffin-embedded Human colon using Thioredoxin 1 (Trx1/Thioredoxin 1 (Trx1/TXN)) Rabbit pAb (A7638) at dilution of 1:300 (40x lens). High pressure antigen retrieval performed with 0.01M Citrate buffer (pH 6.0) prior to IHC staining.