

RAB5B Rabbit pAb

Catalog No.: A7447

1 Publications

Basic Information

Observed MW

24kDa

Calculated MW

24kDa

Category

Primary antibody

Applications

ELISA, WB, IF/ICC

Cross-Reactivity

Human, Mouse, Rat

Background

Enables GDP binding activity; GTP-dependent protein binding activity; and GTPase activity. Involved in antigen processing and presentation and plasma membrane to endosome transport. Located in endosome and extracellular exosome.

Recommended Dilutions

WB 1:500 - 1:2000

IF/ICC 1:50 - 1:200

Immunogen Information

Gene ID

5869

Swiss Prot

P61020

Immunogen

A synthetic peptide corresponding to a sequence within amino acids 100-200 of human RAB5B (NP_002859.1).

Synonyms

RAB5B

Contact

 | 400-999-6126

 | cn.market@abclonal.com.cn

 | www.abclonal.com.cn

Product Information

Source

Rabbit

Isotype

IgG

Purification

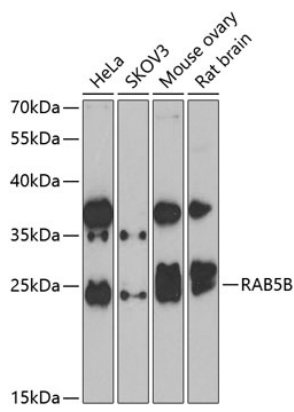
Affinity purification

Storage

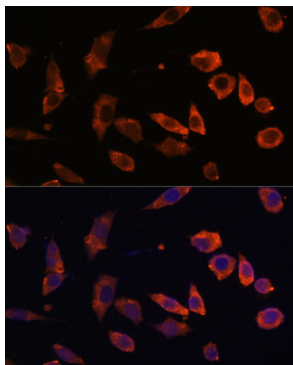
Store at -20°C. Avoid freeze / thaw cycles.

Buffer: PBS with 0.01% thimerosal, 50% glycerol, pH7.3.

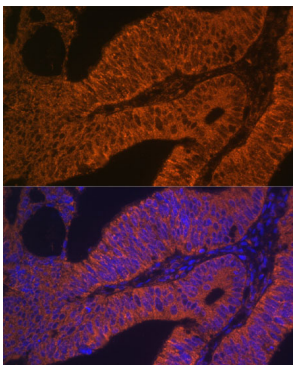
Validation Data



Western blot analysis of extracts of various cell lines, using RAB5B antibody (A7447) at 1:1000 dilution. Secondary antibody: HRP Goat Anti-Rabbit IgG (H+L) (AS014) at 1:10000 dilution. Lysates/proteins: 25µg per lane. Blocking buffer: 3% nonfat dry milk in TBST. Detection: ECL Enhanced Kit (RM00021). Exposure time: 90s.



Immunofluorescence analysis of L929 cells using RAB5B antibody (A7447) at dilution of 1:100. Blue: DAPI for nuclear staining.



Immunofluorescence analysis of human colon carcinoma using RAB5B antibody (A7447) at dilution of 1:100. Blue: DAPI for nuclear staining.